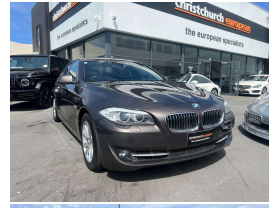


2013 BMW 520i SE Sedan Facelift



VEHICLE INFORMATION

Cash Price

Includes GST,
Registration &
Licensing

\$19,995

Finance this vehicle
from only

\$69.55

per week*

Total Amount Payable

\$24,081.94

finance
NOW



Gain peace of mind
with Mechanical
Breakdown Insurance.
Ask us how.

Body

5 door, Sedan

Odometer

61,000 km

Engine

2000 cc

Fuel Type

Petrol

Transmission

8 Speed Automatic

Wheels

18.0000"

VIN

-

Reg No.

-

Ext Colour

Bronze Metallic

History

-

Seats

5 seats

Interior

Black Leather

Audio

-

Stock ID

12413

2013 BMW 520i SE Facelift Sedan, Low 61,000kms from new! Attractive Bronze Metallic with Black Leather, Factory Alloys, Push Button Start, 8 Speed Automatic with Paddleshift, Very economical 2.0 Turbo petrol engine, Cruise Control, Remote Locking, ABS/ESP, BMW I-Drive with CD/Stereo/Bluetooth Phone/NZ Nav/Parking Sonar, Climate Air, Multiple Airbags etc. Value for money late model BMW Sedan!

christchurch european | the european specialists

Phone 03 366 8328, Email sales@christchurcheruropean.co.nz
511 Blenheim Road, Sockburn, Christchurch 8042, New Zealand
www.christchurcheruropean.co.nz

Niki Mills - 021 353 315
Paul Mills - 022 536 0868
Michael Mills - 022 043 3700

* Finance calculation based on a 60 month term, 30% deposit and with an example annual fixed interest rate of 9.95%. Actual interest rate may be higher or lower. Includes an establishment fee of \$205.00. Full term total amount payable of \$24,081.94. Estimate only, not an offer of finance. Terms, conditions and lending criteria apply.