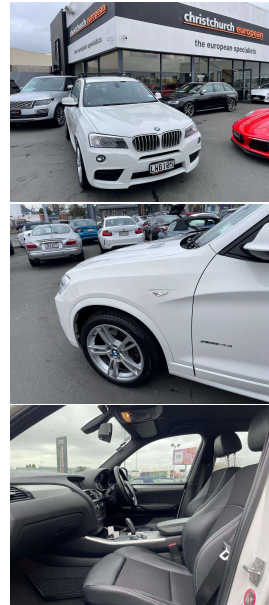


# 2011 BMW X3 3.0 XDrive Motorsport New Shape



## VEHICLE INFORMATION

### Cash Price

Includes GST,  
Registration &  
Licensing

**\$22,995**

Finance this vehicle  
from only

**\$79.84**

per week\*

Total Amount Payable

**\$27,655.97**

finance  
**NOW**



Gain peace of mind  
with Mechanical  
Breakdown Insurance.  
Ask us how.

### Body

5 door, RV/SUV

### Odometer

141,000 km

### Engine

3000 cc

### Fuel Type

Petrol

### Transmission

8 Speed Auto, 4WD

### Wheels

18.0000"

### VIN

-

### Reg No.

LWB105

### Ext Colour

Alpine White

### History

-

### Seats

5 seats

### Interior

Black Part Leather

### Audio

-

### Stock ID

11238

2011 BMW X3 3.0 X-Drive New Shape Motorsport, A very popular model!, New Generation larger X3 with revised styling/8 Speed Gearbox and improved I-Drive system, Factory Motorsport with additional lower colour-coding, Part Leather Motorsport Seating and Titanium inlays, Electric Seats, LED Lighting, NZ Navigation with CD/AUX/Stereo and 360 Cameras, Roof rails and Roof Rack's fitted, Towbar fitted, Privacy Glass, Remote Locking, Multiple Airbags, Push Button Start etc. Economical, Modern and practical mid-size 4WD!.

**christchurch european** | the european specialists

Phone 03 366 8328, Email [sales@christchurcheruropean.co.nz](mailto:sales@christchurcheruropean.co.nz)  
511 Blenheim Road, Sockburn, Christchurch 8042, New Zealand  
[www.christchurcheruropean.co.nz](http://www.christchurcheruropean.co.nz)

Niki Mills - 021 353 315  
Paul Mills - 022 536 0868  
Michael Mills - 022 043 3700

\* Finance calculation based on a 60 month term, 30% deposit and with an example annual fixed interest rate of 9.95%. Actual interest rate may be higher or lower. Includes an establishment fee of \$205.00. Full term total amount payable of \$27,655.97. Estimate only, not an offer of finance. Terms, conditions and lending criteria apply.