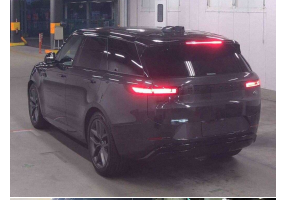
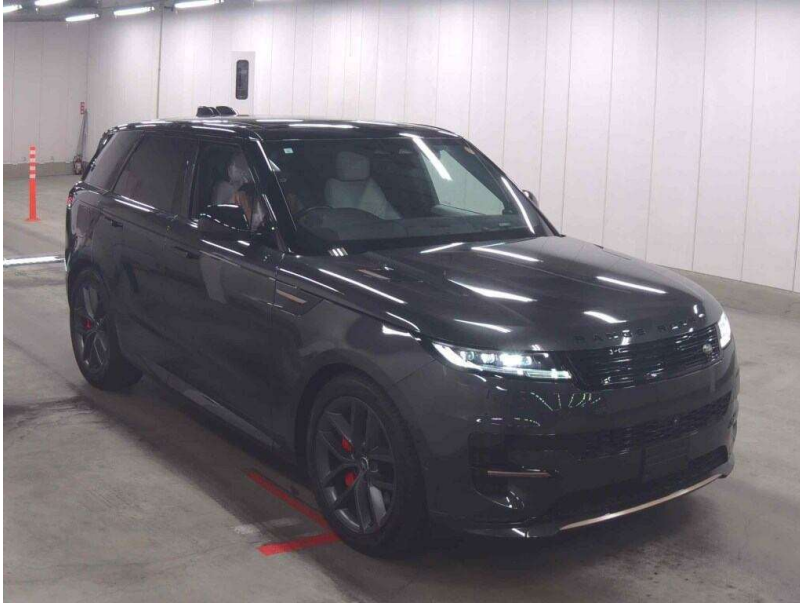


# 2023 Land Rover Range Rover Sport D300



## VEHICLE INFORMATION

### Cash Price

Includes GST,  
Registration &  
Licensing

**\$139,995**

Finance this vehicle  
from only

**\$507.35**

per week\*

Total Amount Payable

\$173,909.24



Gain peace of mind  
with Mechanical  
Breakdown Insurance.  
Ask us how.

### Body

5 door, SUV / 4x4

### Odometer

67,000 km

### Engine

3000 cc, Internal Combustion

### Fuel Type

Diesel

### Transmission

8 Speed Automatic, 4WD

### Wheels

22.0000"

### VIN

SAL1A2AW9PA124880

### Reg No.

-

### Ext Colour

Carpathian Dark Grey Metallic

### History

Ex-Overseas

### Seats

5 seats

### Interior

Black/Ivory Two-tone Leather

### Audio

-

### Stock ID

14856

2023 Range Rover Sport D300 Diesel R-Dynamic SE Latest Model. Attractive and easy-care in Carpathian Grey with Premium Ivory/Black Two-Tone Leather, Upgraded 22 inch Graphite Sports Alloy Wheels, SVO Premium Bespoke Carpets, Dynamic Air Suspension, Privacy Glass, Deployable Running Boards, Premium Heated/Electric Seats, Full Glass Panoramic Roof, Daytime LED Matrix Lighting, Electric Tailgate, Flush Electric Door Handles, Meridian Surround Sound, Clear View Sight Camera, Full Virtual Dash Cluster with 3D NZ Nav/Apple Car Play/Reverse Camera/Bluetooth, Heated Steering Wheel, Radar Adaptive Cruise Control, Ambient Lighting, Keyless entry, Full Electrics etc. Compare the value here for the very latest D300 model with this look!

**christchurch european**

**the european specialists**

Phone 03 366 8328, Email [sales@christchurcheuropean.co.nz](mailto:sales@christchurcheuropean.co.nz)  
511 Blenheim Road, Sockburn, Christchurch 8042, New Zealand  
[www.christchurcheuropean.co.nz](http://www.christchurcheuropean.co.nz)

Niki Mills - 021 353 315  
Paul Mills - 022 536 0868  
Josh Giles - 021 087 54777

\* Finance calculation based on a 60 month term, 30% deposit and with an example annual fixed interest rate of 11.95%. Actual interest rate may be higher or lower. Includes an establishment fee of \$500.00 and a monthly maintenance fee of \$10.00. Full term total amount payable of \$173,909.24. Estimate only, not an offer of finance. Terms, conditions and lending criteria apply.