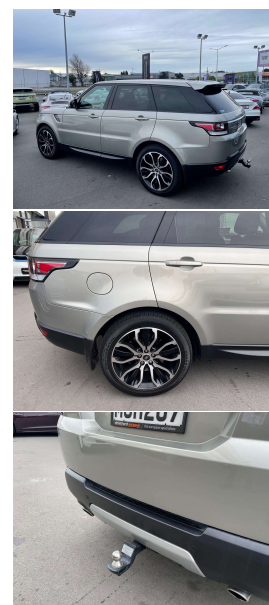
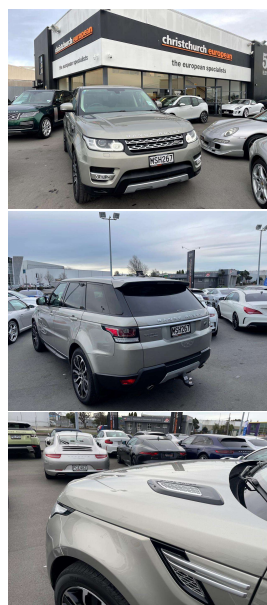


# 2014 Land Rover Range Rover Sport HSE 3.0 SDV6



## VEHICLE INFORMATION

### Cash Price

Includes GST,  
Registration &  
Licensing

**\$54,995**

Finance this vehicle  
from only

**\$189.54**

per week\*

Total Amount Payable

**\$65,778.94**

finance  
**NOW**

### Body

5 door, SUV

### Odometer

107,000 km

### Engine

3000 cc, SDV6

### Fuel Type

Diesel

### Transmission

8 Speed Auto, 4WD

### Wheels

20.0000"

### VIN

-

### Reg No.

MSH267

### Ext Colour

Luxor Gold Metallic

### History

-

### Seats

5 seats

### Interior

Espresso Leather

### Audio

-

### Stock ID

11150



Gain peace of mind  
with Mechanical  
Breakdown Insurance.  
Ask us how.

2014 Range Rover Sport HSE SDV6 Diesel New Model, NZ New just 2 owners from new, Easy care and unique Luxor Gold Metallic with Espresso Dark Leather, Upgraded 21 inch HSE Sports Alloys fitted, Air Suspension with 4WD Terrain response, Heated/Electric Seats, Push Button Start, 8 Speed Automatic, LED Lighting, Privacy Glass, Heated Rear Seats, Woodgrain inlays, Touch Screen NZ NAV/Bluetooth Phone and Music/Reverse Camera, Factory Towbar fitted, Full Electrics etc. New Cambelt and Service just recently completed. Low Running costs and Luxury/Tow ability!.

**christchurch european**

**the european specialists**

Phone 03 366 8328, Email [sales@christchurcheruropean.co.nz](mailto:sales@christchurcheruropean.co.nz)  
511 Blenheim Road, Sockburn, Christchurch 8042, New Zealand  
[www.christchurcheruropean.co.nz](http://www.christchurcheruropean.co.nz)

Niki Mills - 021 353 315  
Paul Mills - 022 536 0868  
Michael Mills - 022 043 3700

\* Finance calculation based on a 60 month term, 30% deposit and with an example annual fixed interest rate of 9.95%. Actual interest rate may be higher or lower. Includes an establishment fee of \$205.00. Full term total amount payable of \$65,778.94. Estimate only, not an offer of finance. Terms, conditions and lending criteria apply.