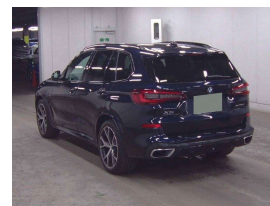
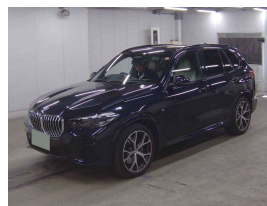
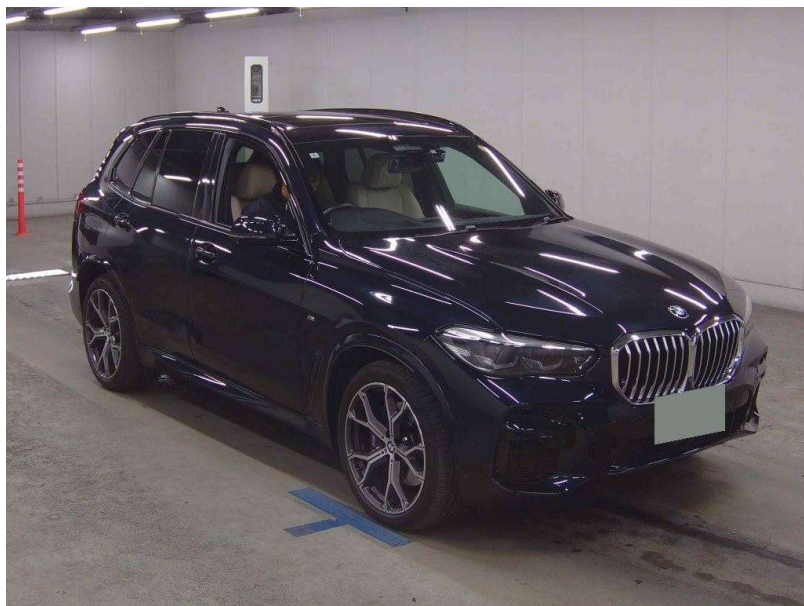


# 2022 BMW X5 35d X-Drive New Shape Motorsport



## VEHICLE INFORMATION

### Cash Price

Includes GST,  
Registration &  
Licensing

**\$89,995**

Finance this vehicle  
from only

**\$320.53**

per week\*

Total Amount Payable

**\$110,337.60**



### Body

5 door, SUV / 4x4

### Odometer

32,000 km

### Engine

3000 cc, Internal Combustion

### Fuel Type

Diesel

### Transmission

8 Speed Automatic, 4WD

### Wheels

21.0000"

### VIN

WBAJU820809K29149

### Reg No.

-

### Ext Colour

Carbon Black Metallic

### History

Ex-Overseas

### Seats

7 seats

### Interior

Cream Leather

### Audio

-

### Stock ID

14487



Gain peace of mind  
with Mechanical  
Breakdown Insurance.  
Ask us how.

2022 BMW X5 35d Diesel X-Drive 4WD Motorsport 7 Seater New Shape, New Generation X5 with the rare 7 Seats option! A great look in signature Carbon Black Metallic with Premium Cream Leather, High-spec vehicle with Panoramic Glass Electric Roof, 21 inch Motorsport Sports Alloys, Heads-up display, 360 Cameras, Heated/Electric Sports Seats, Ambient Lighting, M Sport Aerodynamic Styling, Roof Rails in High-Gloss Black, Enhanced Bluetooth, Air Suspension, Pedestrian Safety, LED Lighting, BMW Live Digital Cockpit Professional with NZ Nav/Bluetooth Streaming Premium Audio System, Privacy Glass etc, USB Charging ports, Reverse Camera, Full Electrics etc. Low kms and late model X5 buying!

**christchurch european** | the european specialists

Phone 03 366 8328, Email [sales@christchurcheuropean.co.nz](mailto:sales@christchurcheuropean.co.nz)  
511 Blenheim Road, Sockburn, Christchurch 8042, New Zealand  
[www.christchurcheuropean.co.nz](http://www.christchurcheuropean.co.nz)

Niki Mills - 021 353 315  
Paul Mills - 022 536 0868  
Josh Giles - 021 087 54777

\* Finance calculation based on a 60 month term, 30% deposit and with an example annual fixed interest rate of 10.95%. Actual interest rate may be higher or lower. Includes an establishment fee of \$500.00 and a monthly maintenance fee of \$10.00. Full term total amount payable of \$110,337.60. Estimate only, not an offer of finance. Terms, conditions and lending criteria apply.