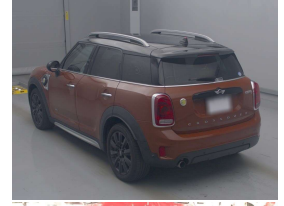


2017 Mini Cooper S E-PHEV ALL4 Hybrid Crossover



VEHICLE INFORMATION

Cash Price

Includes GST,
Registration &
Licensing

\$29,995

Finance this vehicle
from only

\$110.04

per week*

Total Amount Payable

\$37,609.51



Gain peace of mind
with Mechanical
Breakdown Insurance.
Ask us how.

Body

5 door, Hatchback

Odometer

35,000 km

Engine

1500 cc, Plug-In Hybrid

Fuel Type

Electricity

Transmission

Automatic, 4WD

Wheels

18.0000"

VIN

WMWYU720903B87265

Reg No.

-

Ext Colour

Malt Brown

History

Ex-Overseas

Seats

5 seats

Interior

Black Leather Comfort Seats

Audio

-

Stock ID

14445

2017 Mini Cooper S E-PHEV Hybrid Crossover ALL4 SE, A unique car!. A Mini Hybrid with 40kms Full EV range and combined 2.3 Litres/100kms fuel economy. High-spec with 18 inch Factory Mini Sports Alloys in Black, Heated/Electric Premium Leather Seats, Black Roof and Wingmirrors, Radar Adaptive Cruise Control, ALL4 4WD practicality, Factory Mini CD/Stereo/NZ NAV/Reverse Camera and Bluetooth, LED Lighting, Roof Rails, Push Button Start, Sport, ECO and EV Modes, Multiple Airbags, Full Electrics etc. Modern Hybrid Tech and amazing fuel economy in an iconic model!.

Arriving Soon, Small holding deposit will secure this vehicle pre-arrival.

christchurch european | the european specialists

Phone 03 366 8328, Email sales@christchurcheuropean.co.nz
511 Blenheim Road, Sockburn, Christchurch 8042, New Zealand
www.christchurcheuropean.co.nz

Niki Mills - 021 353 315
Paul Mills - 022 536 0868
Josh Giles - 021 087 54777

* Finance calculation based on a 60 month term, 30% deposit and with an example annual fixed interest rate of 10.95%. Actual interest rate may be higher or lower. Includes an establishment fee of \$500.00 and a monthly maintenance fee of \$10.00. Full term total amount payable of \$37,609.51. Estimate only, not an offer of finance. Terms, conditions and lending criteria apply.