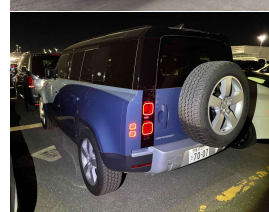


2024 Land Rover Defender 110 D300 S Diesel



VEHICLE INFORMATION

Cash Price

Includes GST,
Registration &
Licensing

\$134,995

Finance this vehicle
from only

\$478.40

per week*

Total Amount Payable

\$164,883.67



Gain peace of mind
with Mechanical
Breakdown Insurance.
Ask us how.

Body

5 door, SUV / 4x4

Odometer

5,000 km

Engine

3000 cc, Internal Combustion

Fuel Type

Diesel

Transmission

8 Speed Automatic, 4WD

Wheels

20.0000"

VIN

SALEA7AW9R2276606

Reg No.

-

Ext Colour

Tasman Blue Metallic

History

Ex-Overseas

Seats

5 seats

Interior

Black Leather Comfort Seats

Audio

-

Stock ID

14335

2024 Land Rover Defender 110 D300 S Diesel. Just 5000kms from new and as new!, Attractive Tasman Blue Metallic with Full Black Leather, Roof Rails fitted, 20 inch Land Rover Alloys in Silver, Heated Seats, Air Suspension, Radar Adaptive Cruise Control, Ambient Lighting, 3D Surround Cameras, Water Wading Aid, Meridian Audio System, Touch Screen NZ NAV/Bluetooth Phone and Music/Car Play, USBs, Full Digital Dash, Full Electrics and more. NZ List \$160k, Save on new here for the best engine variant in a 2024 model!

Arriving Soon, Small holding deposit will secure this vehicle pre-arrival.

christchurch european | the european specialists

Phone 03 366 8328, Email sales@christchurcheuropean.co.nz
511 Blenheim Road, Sockburn, Christchurch 8042, New Zealand
www.christchurcheuropean.co.nz

Niki Mills - 021 353 315
Paul Mills - 022 536 0868
Josh Giles - 021 087 54777

* Finance calculation based on a 60 month term, 30% deposit and with an example annual fixed interest rate of 10.95%. Actual interest rate may be higher or lower. Includes an establishment fee of \$500.00 and a monthly maintenance fee of \$10.00. Full term total amount payable of \$164,883.67. Estimate only, not an offer of finance. Terms, conditions and lending criteria apply.