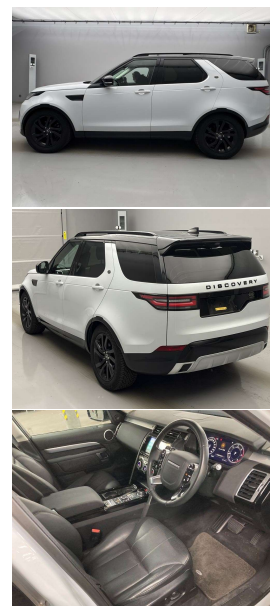
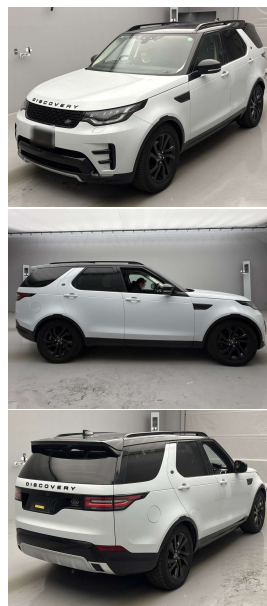


# 2019 Land Rover Discovery 5 3.0 Td6 Landmark



## VEHICLE INFORMATION

### Cash Price

Includes GST,  
Registration &  
Licensing

**\$74,995**

Finance this vehicle  
from only

**\$267.91**

per week\*

Total Amount Payable  
\$92,155.58



### Body

5 door, SUV / 4x4

### Odometer

28,000 km

### Engine

3000 cc, Internal Combustion

### Fuel Type

Diesel

### Transmission

8 Speed Automatic, 4WD

### Wheels

20.0000"

### VIN

SALRA2AK4L2423522

### Reg No.

-

### Ext Colour

Yulong White

### History

Ex-Overseas

### Seats

7 seats

### Interior

Black Leather Comfort Seats

### Audio

-

### Stock ID

14533



Gain peace of mind  
with Mechanical  
Breakdown Insurance.  
Ask us how.

2019 Land Rover Discovery 5 HSE 3.0 Td6 Landmark Dynamic Package, Full Dynamic Sports Styling/Bumpers/Grills. Just 28,000kms from new!, Black Package Grills and Badging, Panoramic Sunroof, 20 inch Gloss Black Sports Alloys, 360 Cameras, Keyless entry, 8 Speed Automatic, Air Suspension, Heated Seats, Heated Steering Wheel, Black Roof Rail Meridian Surround Sound, Daytime LED Running Lights, InControl Aps with NZ NAV/Bluetooth Phone and Streaming/CD/Stereo/USBs, Ambient Lighting, Radar Adaptive Cruise Control, Twin Speed Transfer Box- Low Range, Full TFT Digital Dash, Blind Spot Assist, Apple Car Play, Full Electrics and more. Compare the spec and kms here!

Arriving Soon, Small holding deposit will secure this vehicle pre-arrival.

**christchurch european** | the european specialists

Phone 03 366 8328, Email [sales@christchurcheuropean.co.nz](mailto:sales@christchurcheuropean.co.nz)  
511 Blenheim Road, Sockburn, Christchurch 8042, New Zealand  
[www.christchurcheuropean.co.nz](http://www.christchurcheuropean.co.nz)

Niki Mills - 021 353 315  
Paul Mills - 022 536 0868  
Josh Giles - 021 087 54777

\* Finance calculation based on a 60 month term, 30% deposit and with an example annual fixed interest rate of 10.95%. Actual interest rate may be higher or lower. Includes an establishment fee of \$500.00 and a monthly maintenance fee of \$10.00. Full term total amount payable of \$92,155.58. Estimate only, not an offer of finance. Terms, conditions and lending criteria apply.