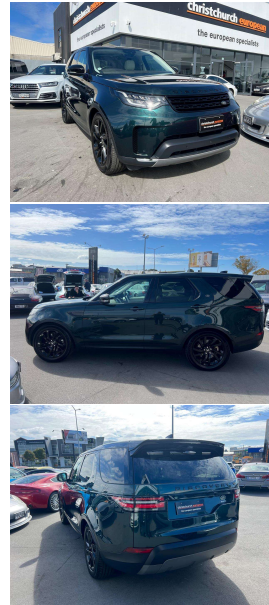


# 2018 Land Rover Discovery 5 HSE V6 Supercharged



## VEHICLE INFORMATION

### Cash Price

Includes GST,  
Registration &  
Licensing

**\$44,995**

Finance this vehicle  
from only

**\$166.37**

per week\*

Total Amount Payable

\$56,754.68



Gain peace of mind  
with Mechanical  
Breakdown Insurance.  
Ask us how.

### Body

5 door, RV/SUV

### Odometer

132,000 km

### Engine

3000 cc, V6 Supercharged

### Fuel Type

Petrol

### Transmission

8 Speed Automatic, 4WD

### Wheels

20.0000"

### VIN

SALRA2AV9HA034575

### Reg No.

QPR627

### Ext Colour

British Racing Green Metallic

### History

Ex-Overseas

### Seats

7 seats

### Interior

Cream Premium Leather

### Audio

-

### Stock ID

14859

2018 Land Rover Discovery 5 HSE 3.0 V6 Supercharged 7-Seater, New Generation 3.0 V6 Supercharged Petrol engine model- Excellent economy with No Diesel Taxes to pay and lower Registration costs. High spec HSE vehicle in Historic British Racing Green Metallic with Cream Windsor Premium Leather, Heated and Cooled Seats, 20 inch HSE Factory Alloys in Black, Glass Panoramic Sunroof, Black Exterior Package and Badging, Console Fridge, Air Suspension, 7 Seats, 360 Cameras, Ambient Lighting, Touch Screen CD/Stereo/Bluetooth Phone and Music and NZ Navigation, Cruise Control, Push Button Start and much more. Very hard to get in this traditional colour combination!

**christchurch european** | the european specialists

Phone 03 366 8328, Email [sales@christchurcheruropean.co.nz](mailto:sales@christchurcheruropean.co.nz)  
511 Blenheim Road, Sockburn, Christchurch 8042, New Zealand  
[www.christchurcheruropean.co.nz](http://www.christchurcheruropean.co.nz)

Niki Mills - 021 353 315  
Paul Mills - 022 536 0868  
Josh Giles - 021 087 54777

\* Finance calculation based on a 60 month term, 30% deposit and with an example annual fixed interest rate of 11.95%. Actual interest rate may be higher or lower. Includes an establishment fee of \$500.00 and a monthly maintenance fee of \$10.00. Full term total amount payable of \$56,754.68. Estimate only, not an offer of finance. Terms, conditions and lending criteria apply.