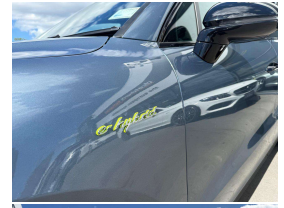


# 2020 Porsche Cayenne E-Hybrid PHEV New Model



## VEHICLE INFORMATION

### Cash Price

Includes GST,  
Registration &  
Licensing

**\$109,995**

Finance this vehicle  
from only

**\$378.09**

per week\*

Total Amount Payable

**\$131,302.80**

finance  
**NOW**



Gain peace of mind  
with Mechanical  
Breakdown Insurance.  
Ask us how.

### Body

5 door, RV/SUV

### Odometer

79,000 km

### Engine

3000 cc, Plug-In Hybrid

### Fuel Type

Petrol

### Transmission

8 Speed Automatic, 4WD

### Wheels

21.0000"

### VIN

-

### Reg No.

QGU481

### Ext Colour

Graphite Metallic

### History

-

### Seats

5 seats

### Interior

Black Leather

### Audio

-

### Stock ID

13124

2020 Porsche Cayenne E-Hybrid PHEV New Model. The best of both worlds!. 45kms Full-Electric range ability with Hybrid lower Emissions and a V6 Turbo engine for Performance and Long range. Exclusive Graphite Metallic with Black Leather, Upgraded 21 inch Cayenne Exclusive Design Alloys, Added Thule Roof Racks and European plates, Hybrid Design Brake Calipers, Panoramic Glass Roof, Sport-Chrono Package, Heated Seats and added Heated Steering Wheel, Mirrors in Gloss Black, LED Matrix Lighting, Door Handles in Gloss Black, Gloss Black Interior Package, Touch Screen PCM with NZ NAV/Bluetooth Streaming/Car Play/Reverse Camera, Matching Pirelli Tyres all round, Full Electrics etc. A very hard to get model in E-Hybrid!.

**christchurch european**

**the european specialists**

Phone 03 366 8328, Email [sales@christchurcheruropean.co.nz](mailto:sales@christchurcheruropean.co.nz)  
511 Blenheim Road, Sockburn, Christchurch 8042, New Zealand  
[www.christchurcheruropean.co.nz](http://www.christchurcheruropean.co.nz)

Niki Mills - 021 353 315  
Paul Mills - 022 536 0868  
Josh Giles - 021 087 54777

\* Finance calculation based on a 60 month term, 30% deposit and with an example annual fixed interest rate of 9.95%. Actual interest rate may be higher or lower. Includes an establishment fee of \$205.00. Full term total amount payable of \$131,302.80. Estimate only, not an offer of finance. Terms, conditions and lending criteria apply.