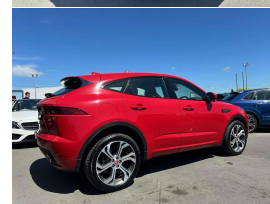


2018 Jaguar E-Pace D180 First Edition High-Spec



VEHICLE INFORMATION

Cash Price

Includes GST,
Registration &
Licensing

\$44,995

Finance this vehicle
from only

\$162.67

per week*

Total Amount Payable
\$55,791.53



Gain peace of mind
with Mechanical
Breakdown Insurance.
Ask us how.

Body

5 door, RV/SUV

Odometer

48,000 km

Engine

2000 cc, Diesel

Fuel Type

Diesel

Transmission

8 Speed Automatic, 4WD

Wheels

20.0000"

VIN

SADFA2AN7J1Z29101

Reg No.

-

Ext Colour

Caldera Red

History

-

Seats

5 seats, Leather

Interior

Black Leather with Red Stitching,

Audio

-

Stock ID

13096

2018 Jaguar E-Pace D180 R-Dynamic First Edition AWD, Ltd Edition First Edition model, Attractive Red with Black Leather/Red Stitching detail, Low 48,000kms from new, Ultra-economical 2.0 Diesel, Heated/Electric/Memory Seats, Radar Adaptive Cruise Control, Heads-up display, 8 Speed Automatic, Panoramic Glass Roof, Push Button Start, Privacy Glass, Lane Keep Assist, 360 Surround Cameras, 20 inch Sports Alloys, Ambient Lighting, LED Lighting, Touch Screen NZ NAV/CD/AUX/Bluetooth Phone and Music Streaming, Climate Air, Multiple Airbags, Electric Tailgate and much more!. Very good value for money here for the current shape!.

Auction Grade 4.5/5 vehicle.

christchurch european | the european specialists

Phone 03 366 8328, Email sales@christchurcheuropean.co.nz
511 Blenheim Road, Sockburn, Christchurch 8042, New Zealand
www.christchurcheuropean.co.nz

Niki Mills - 021 353 315
Paul Mills - 022 536 0868
Josh Giles - 021 087 54777

* Finance calculation based on a 60 month term, 30% deposit and with an example annual fixed interest rate of 10.95%. Actual interest rate may be higher or lower. Includes an establishment fee of \$500.00 and a monthly maintenance fee of \$10.00. Full term total amount payable of \$55,791.53. Estimate only, not an offer of finance. Terms, conditions and lending criteria apply.