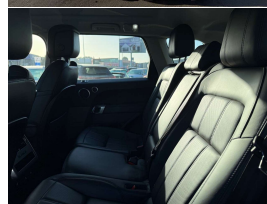
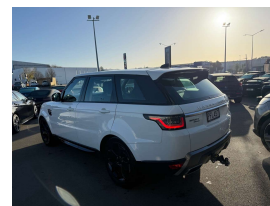


# 2018 Land Rover Range Rover Sport 3.0 SDV6 HSE



## VEHICLE INFORMATION

### Cash Price

Includes GST,  
Registration &  
Licensing

**\$74,995**

Finance this vehicle  
from only

**\$267.91**

per week\*

Total Amount Payable  
\$92,155.58



Gain peace of mind  
with Mechanical  
Breakdown Insurance.  
Ask us how.

### Body

5 door, RV/SUV

### Odometer

121,000 km

### Engine

3000 cc

### Fuel Type

Diesel

### Transmission

8 Speed Auto, 4WD

### Wheels

20.0000"

### VIN

-

### Reg No.

PFL457

### Ext Colour

Fuji White

### History

-

### Seats

5 seats

### Interior

Black Leather

### Audio

-

### Stock ID

13672

2018 Range Rover Sport 3.0 SDV6 HSE Facelift Model Black-Edition, Attractive Fuji White with Black Leather combination, Factory 20" HSE Gloss Black Sports Alloys, Heated/Electric Seats, Added Heated Rear Seats, Virtual Dash Cluster and Glass Screen with CD/Stereo/Bluetooth Streaming/NZ Nav/Reverse Camera, Apple Car Play/Android Auto, Meridian Premium Audio System, Lane Departure Warning, LED Lighting, Auto Stop/Start with 8 Speed Automatic, Air Suspension, Climate Air, Push Button Start and much more. Great price range buying here for the Facelift model Sport!

**christchurch european** | the european specialists

Phone 03 366 8328, Email [sales@christchurcheuropean.co.nz](mailto:sales@christchurcheuropean.co.nz)  
511 Blenheim Road, Sockburn, Christchurch 8042, New Zealand  
[www.christchurcheuropean.co.nz](http://www.christchurcheuropean.co.nz)

Niki Mills - 021 353 315  
Paul Mills - 022 536 0868  
Josh Giles - 021 087 54777

\* Finance calculation based on a 60 month term, 30% deposit and with an example annual fixed interest rate of 10.95%. Actual interest rate may be higher or lower. Includes an establishment fee of \$500.00 and a monthly maintenance fee of \$10.00. Full term total amount payable of \$92,155.58. Estimate only, not an offer of finance. Terms, conditions and lending criteria apply.