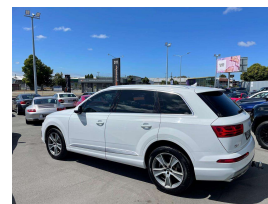


# 2016 Audi Q7 3.0 TDI 200KW 8 Speed New Shape



## VEHICLE INFORMATION

### Cash Price

Includes GST,  
Registration &  
Licensing

# \$34,995

Finance this vehicle  
from only

# \$130.48

per week\*

Total Amount Payable

\$44,422.62



Gain peace of mind  
with Mechanical  
Breakdown Insurance.  
Ask us how.

### Body

5 door, RV/SUV

### Odometer

195,000 km

### Engine

3000 cc, Internal Combustion

### Fuel Type

Diesel

### Transmission

8 Speed Automatic, 4WD

### Wheels

19.0000"

### VIN

WAUZZZ4M5GD022624

### Reg No.

MNQ66

### Ext Colour

White

### History

NZ New

### Seats

7 seats

### Interior

Black Leather

### Audio

-

### Stock ID

14891

2016 Audi Q7 3.0 TDI New Shape 200KW Diesel, Up-rated 3.0 200KW TDI Diesel engine model, NZ New with Full Service History, Full Leather, Heated Seats, Radar Adaptive Cruise Control, LED Lighting, Push Button Start, Audi MMI with CD/Stereo/Bluetooth Streaming/NZ Navigation and Reverse Camera, Factory Audi Towbar fitted, Roof Rails, 7 Seats with electric fold-away rears, Parking Sensors, Privacy Glass, Climate Air Conditioning, Full Electrics etc. Very good value for money today for the new shape Q7!.

**christchurch european** | the european specialists

Phone 03 366 8328, Email [sales@christchurcheruropean.co.nz](mailto:sales@christchurcheruropean.co.nz)  
511 Blenheim Road, Sockburn, Christchurch 8042, New Zealand  
[www.christchurcheruropean.co.nz](http://www.christchurcheruropean.co.nz)

Niki Mills - 021 353 315  
Paul Mills - 022 536 0868  
Josh Giles - 021 087 54777

\* Finance calculation based on a 60 month term, 30% deposit and with an example annual fixed interest rate of 11.95%. Actual interest rate may be higher or lower. Includes an establishment fee of \$500.00 and a monthly maintenance fee of \$10.00. Full term total amount payable of \$44,422.62. Estimate only, not an offer of finance. Terms, conditions and lending criteria apply.