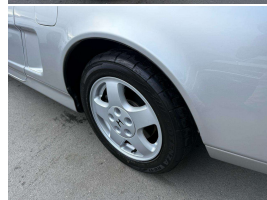


# 1991 Honda NSX Coupe



## VEHICLE INFORMATION

### Cash Price

Includes GST,  
Registration &  
Licensing

**\$139,995**

Finance this vehicle  
from only

**\$495.95**

per week\*

Total Amount Payable  
\$170,944.34



Gain peace of mind  
with Mechanical  
Breakdown Insurance.  
Ask us how.

### Body

2 door, Coupe

### Odometer

53,000 km

### Engine

3000 cc, VTEC

### Fuel Type

-

### Transmission

Automatic

### Wheels

-

### VIN

-

### Reg No.

QCL876

### Ext Colour

Silver Metallic

### History

-

### Seats

2 seats

### Interior

Black Leather

### Audio

-

### Stock ID

13907

1991 Honda NSX Coupe, Iconic and now very collectable 90's Supercar- designed with Ayrton Senna's input. Just 53,000kms from new with Japan and NZ History and Multiple Service receipts inclusive, Full Leather, Factory Alloys, Electric Seats, 3.0 VTEC NA V6, Pop-up Headlights, Black Roof Contrast, Rear Spoiler, Full Electrics etc. This car will be worth a lot of money one day!..

**christchurch european** | the european specialists

Phone 03 366 8328, Email [sales@christchurcheuropean.co.nz](mailto:sales@christchurcheuropean.co.nz)  
511 Blenheim Road, Sockburn, Christchurch 8042, New Zealand  
[www.christchurcheuropean.co.nz](http://www.christchurcheuropean.co.nz)

Niki Mills - 021 353 315  
Paul Mills - 022 536 0868  
Josh Giles - 021 087 54777

\* Finance calculation based on a 60 month term, 30% deposit and with an example annual fixed interest rate of 10.95%. Actual interest rate may be higher or lower. Includes an establishment fee of \$500.00 and a monthly maintenance fee of \$10.00. Full term total amount payable of \$170,944.34. Estimate only, not an offer of finance. Terms, conditions and lending criteria apply.