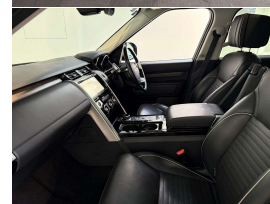
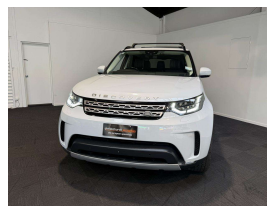


2017 Land Rover Discovery 5 HSE V6 Supercharged



VEHICLE INFORMATION

Cash Price

Includes GST,
Registration &
Licensing

\$59,995

Finance this vehicle
from only

\$215.29

per week*

Total Amount Payable
\$73,973.55



Gain peace of mind
with Mechanical
Breakdown Insurance.
Ask us how.

Body

5 door, RV/SUV

Odometer

87,000 km

Engine

3000 cc, V6 Supercharged

Fuel Type

Petrol

Transmission

8 Speed Automatic, 4WD

Wheels

21.0000"

VIN

SALRA2AV0HA013551

Reg No.

OY0Y

Ext Colour

Yulong White

History

Ex-Overseas

Seats

7 seats

Interior

Black Leather

Audio

-

Stock ID

14520

2017 Land Rover Discovery 5 HSE Luxury 3.0 V6 Supercharged 7 Seater, Top spec HSE Luxury in Yulong White with Black Leather, Only 87,000kms/1 NZ Owner previously imported by ourselves!, Sports Alloys in Black with ATR Tyres, Extended Roof Rails with Whispbar Roof Racks, Panoramic Glass Roof, Heated Steering Wheel and Heated/Cooling Climate Seats, Ambient Lighting, Full Park Assist with Surround Cameras, Running Boards Fitted, Keyless entry, Lane Assist, Dual Rear DVD Screens fitted, Towbar fitted, Electric Powered 7 Seats, Air Suspension, Cooler Box, Wi-Fi Hotspot, In-Control Aps, Bluetooth Streaming/NZ NAV, Full Electrics and more. Hard to get in Yulong White and no Diesel Taxes to pay!

christchurch european | the european specialists

Phone 03 366 8328, Email sales@christchurcheuropean.co.nz
511 Blenheim Road, Sockburn, Christchurch 8042, New Zealand
www.christchurcheuropean.co.nz

Niki Mills - 021 353 315
Paul Mills - 022 536 0868
Josh Giles - 021 087 54777

* Finance calculation based on a 60 month term, 30% deposit and with an example annual fixed interest rate of 10.95%. Actual interest rate may be higher or lower. Includes an establishment fee of \$500.00 and a monthly maintenance fee of \$10.00. Full term total amount payable of \$73,973.55. Estimate only, not an offer of finance. Terms, conditions and lending criteria apply.