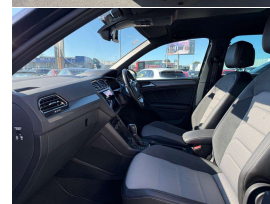
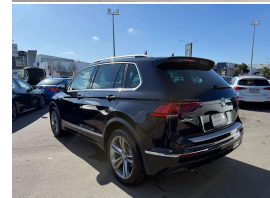
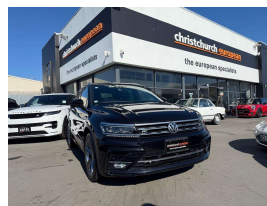


# 2019 Volkswagen Tiguan 2.0 TDI Diesel 4Motion R



## VEHICLE INFORMATION

### Cash Price

Includes GST,  
Registration &  
Licensing

**\$39,995**

Finance this vehicle  
from only

**\$145.12**

per week\*

Total Amount Payable  
\$49,730.86



Gain peace of mind  
with Mechanical  
Breakdown Insurance.  
Ask us how.

### Body

5 door, RV/SUV

### Odometer

59,000 km

### Engine

2000 cc

### Fuel Type

-

### Transmission

8 Speed Automatic, 4WD

### Wheels

19.0000"

### VIN

WVGZZZ5NZKW345927

### Reg No.

-

### Ext Colour

Black Metallic

### History

-

### Seats

5 seats

### Interior

R Line Sports Seats

### Audio

-

### Stock ID

13720

2019 Volkswagen Tiguan 2.0 TDI R-Line 4Motion 4WD, Very popular mid-size Volkswagen SUV model, Just 59,000kms from new!, Black Metallic with R Line Two-tone Sports interior, Heated/Electric Seats, Privacy Glass, 19 inch Grey R Line Sports Alloys, LED Lighting, Push Button Start, 8 Speed Automatic, Radar Adaptive Cruise Control and Lane Assist, Multiple Airbags, Climate Air, Rear Picnic Tables, Touch Screen VW CD/Stereo/Bluetooth Streaming/NZ NAV/Reverse Camera/Apple Car Play, Full Electrics etc. Economy, Style and VW Safety here!

**christchurch european** | the european specialists

Phone 03 366 8328, Email [sales@christchurcheuropean.co.nz](mailto:sales@christchurcheuropean.co.nz)  
511 Blenheim Road, Sockburn, Christchurch 8042, New Zealand  
[www.christchurcheuropean.co.nz](http://www.christchurcheuropean.co.nz)

Niki Mills - 021 353 315  
Paul Mills - 022 536 0868  
Josh Giles - 021 087 54777

\* Finance calculation based on a 60 month term, 30% deposit and with an example annual fixed interest rate of 10.95%. Actual interest rate may be higher or lower. Includes an establishment fee of \$500.00 and a monthly maintenance fee of \$10.00. Full term total amount payable of \$49,730.86. Estimate only, not an offer of finance. Terms, conditions and lending criteria apply.