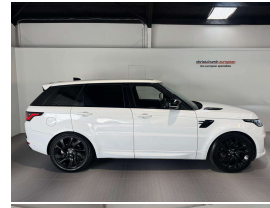


2019 Land Rover Range Rover Sport HSE Dynamic



VEHICLE INFORMATION

Cash Price

Includes GST,
Registration &
Licensing

\$79,995

Finance this vehicle
from only

\$291.99

per week*

Total Amount Payable

\$99,916.89



Gain peace of mind
with Mechanical
Breakdown Insurance.
Ask us how.

Body

5 door, SUV / 4x4

Odometer

55,000 km

Engine

3000 cc, Internal Combustion

Fuel Type

Diesel

Transmission

8 Speed Automatic, 4WD

Wheels

22.0000"

VIN

SALWA2AK9LA706202

Reg No.

NMC657

Ext Colour

Fuji White

History

Ex-Overseas

Seats

5 seats

Interior

Black HSE Soft Leather

Audio

-

Stock ID

14773

2019 Range Rover Sport HSE SDV6 Dynamic Facelift Model, A very high-spec vehicle! Only 55,000kms from new, Factory Black Styling Package, Upgraded 21 inch HSE Dynamic Sports Alloys in Black, 8 Speed Automatic, Full Glass Digital Cockpit, Touch Screen In-Control Aps, Panoramic Glass Roof, Heads-up display, Heated/Electric Leather Seats, Privacy Glass, Added Console Fridge, Air Suspension, NZ NAV/Bluetooth Phone and Music/Reverse Camera, Push Button Start, Blind Spot Monitor, 360 Parking Aid, Meridian Audio System, LED Lighting, Radar Adaptive Cruise Control, Factory Electric Towbar, Full Electrics and much more. Hard to get this highly optioned and low kms!

christchurch european | the european specialists

Phone 03 366 8328, Email sales@christchurcheruropean.co.nz
511 Blenheim Road, Sockburn, Christchurch 8042, New Zealand
www.christchurcheruropean.co.nz

Niki Mills - 021 353 315
Paul Mills - 022 536 0868
Josh Giles - 021 087 54777

* Finance calculation based on a 60 month term, 30% deposit and with an example annual fixed interest rate of 11.95%. Actual interest rate may be higher or lower. Includes an establishment fee of \$500.00 and a monthly maintenance fee of \$10.00. Full term total amount payable of \$99,916.89. Estimate only, not an offer of finance. Terms, conditions and lending criteria apply.