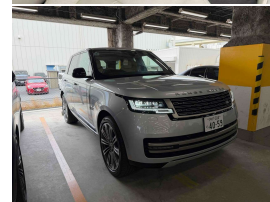


2023 Land Rover Range Rover D300 HSE Latest



VEHICLE INFORMATION

Cash Price

Includes GST,
Registration &
Licensing

\$179,995

Finance this vehicle
from only

\$650.92

per week*

Total Amount Payable

\$223,237.48



Body

5 door, RV/SUV

Odometer

43,000 km

Engine

3000 cc

Fuel Type

Diesel

Transmission

8 Speed Automatic, 4WD

Wheels

23.0000"

VIN

SALKA9AW5PA080759

Reg No.

-

Ext Colour

Silver Metallic

History

-

Seats

5 seats

Interior

Cream Leather

Audio

-

Stock ID

14871



Gain peace of mind
with Mechanical
Breakdown Insurance.
Ask us how.

2023 Range Rover D300 HSE New Model, Very latest model Range Rover HSE, Very high-spec and attractive in Silver Metallic with upgraded 23 inch Factory Sports Alloys, Added Heads-up display, Soft Close Doors, Panoramic Glass Sunroof, Privacy Glass, Heated and Ventilated Premium HSE Leather Seats, 4 Wheel Steering, Radar Adaptive Cruise Control with AEB Braking, Full Virtual Dash with latest Pivi Pro Touch-Screen Land Rover Infotainment-Apple Car Play/Bluetooth Phone and Music with Meridian 3D Surround Audio System/Google NZ Navigation, Air Suspension, LED Daytime Running Lights, Electric Tailgate, Keyless entry, Heated Steering Wheel, 3D Surround Cameras, Luxury Woodgrain inlays with SV upgraded Steering Wheel, Clearview Sight Interior mirror, Land Rover 4WD Terrain response and more. The best look and value in the Country!.

christchurch european | the european specialists

Phone 03 366 8328, Email sales@christchurcheuropean.co.nz
511 Blenheim Road, Sockburn, Christchurch 8042, New Zealand
www.christchurcheuropean.co.nz

Niki Mills - 021 353 315
Paul Mills - 022 536 0868
Josh Giles - 021 087 54777

* Finance calculation based on a 60 month term, 30% deposit and with an example annual fixed interest rate of 11.95%. Actual interest rate may be higher or lower. Includes an establishment fee of \$500.00 and a monthly maintenance fee of \$10.00. Full term total amount payable of \$223,237.48. Estimate only, not an offer of finance. Terms, conditions and lending criteria apply.