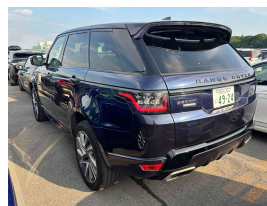


# 2019 Land Rover Range Rover Sport 5.0 V8 SC



## VEHICLE INFORMATION

### Cash Price

Includes GST,  
Registration &  
Licensing

**\$79,995**

Finance this vehicle  
from only

**\$285.45**

per week\*

Total Amount Payable  
\$98,216.25



### Body

5 door, RV/SUV

### Odometer

121,000 km

### Engine

5000 cc, 5.0 Supercharged V8

### Fuel Type

Petrol

### Transmission

8 Speed Automatic, 4WD

### Wheels

21.0000"

### VIN

SALWA2AE6KA819873

### Reg No.

-

### Ext Colour

Loire Blue Metallic

### History

-

### Seats

7 seats

### Interior

Black/Tan Two Tone Premium

### Audio

-

### Stock ID

13881



Gain peace of mind  
with Mechanical  
Breakdown Insurance.  
Ask us how.

2019 Range Rover Sport P525 5.0 V8 Supercharged Facelift Autobiography 7 Seater, Top of the line Autobiography model, Stunning Loire Blue Metallic with special order Two-tone Vintage Tan/Black Leather Autobiography Seats, Heated and Cooling Seats, Electric fold-away rear 7 seats option included, 21 inch Turbine Style Sports Alloys in Grey, Red Brake Calipers, Electric Panoramic Glass Roof, LED Matrix Lighting, Black-Pack Exterior Styling, Soft-Close Doors, Privacy Glass, Console Fridge, Radar Adaptive Cruise Control, Heated Steering Wheel, Touch Screen NZ NAV/Bluetooth Streaming/360 Cameras/Apple Car Play, Ambient Lighting, Full Electrics and much more! Supercar Performance here in a Luxury 7 Seat 4WD!

**christchurch european** | the european specialists

Phone 03 366 8328, Email [sales@christchurcheuropean.co.nz](mailto:sales@christchurcheuropean.co.nz)  
511 Blenheim Road, Sockburn, Christchurch 8042, New Zealand  
[www.christchurcheuropean.co.nz](http://www.christchurcheuropean.co.nz)

Niki Mills - 021 353 315  
Paul Mills - 022 536 0868  
Josh Giles - 021 087 54777

\* Finance calculation based on a 60 month term, 30% deposit and with an example annual fixed interest rate of 10.95%. Actual interest rate may be higher or lower. Includes an establishment fee of \$500.00 and a monthly maintenance fee of \$10.00. Full term total amount payable of \$98,216.25. Estimate only, not an offer of finance. Terms, conditions and lending criteria apply.