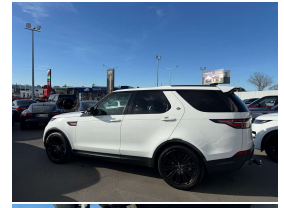


# 2019 Land Rover Discovery 5 HSE 3.0 Td6 RWC



## VEHICLE INFORMATION

### Cash Price

Includes GST,  
Registration &  
Licensing

**\$64,995**

Finance this vehicle  
from only

**\$238.15**

per week\*

Total Amount Payable

**\$81,418.80**



Gain peace of mind  
with Mechanical  
Breakdown Insurance.  
Ask us how.

### Body

5 door, RV/SUV

### Odometer

95,000 km

### Engine

3000 cc

### Fuel Type

Diesel

### Transmission

8 Speed Automatic, 4WD

### Wheels

21.0000"

### VIN

SALRA2AK4K2409456

### Reg No.

RLF859

### Ext Colour

Fuji White

### History

-

### Seats

7 seats

### Interior

Black Leather

### Audio

-

### Stock ID

14796

2019 Land Rover Discovery 5 HSE 3.0 Td6 7 Seater Rugby World Cup 2019 Edition, Land Rover limited release spec vehicle, Facelift 19MY Virtual Dash Cluster and revised Steering Wheel, Upgraded Black Badging/Black Grills and 21 inch HSE Sports Alloys in Gloss Black fitted, LED Lighting, 2 Speed Twin-Transfer Case, Ambient Lighting Package with 360 Surround Cameras, Lane Keep Assist, Adaptive Radar Cruise Control, Full Leather with Heated Seats and added Heated Steering Wheel, Electric 3rd Row Seats, Electric Tailgate, Touch Screen NZ NAV/CD/AUX/Bluetooth Phone and Music/Car Play, Privacy Glass, Air Suspension, Blind Spot Assist, Towbar fitted, 4WD Terrain response, Full Electrics and more.. A very popular Luxury 7 Seat model on NZ roads!

**christchurch european** | the european specialists

Phone 03 366 8328, Email [sales@christchurcheruropean.co.nz](mailto:sales@christchurcheruropean.co.nz)  
511 Blenheim Road, Sockburn, Christchurch 8042, New Zealand  
[www.christchurcheruropean.co.nz](http://www.christchurcheruropean.co.nz)

Niki Mills - 021 353 315  
Paul Mills - 022 536 0868  
Josh Giles - 021 087 54777

\* Finance calculation based on a 60 month term, 30% deposit and with an example annual fixed interest rate of 11.95%. Actual interest rate may be higher or lower. Includes an establishment fee of \$500.00 and a monthly maintenance fee of \$10.00. Full term total amount payable of \$81,418.80. Estimate only, not an offer of finance. Terms, conditions and lending criteria apply.