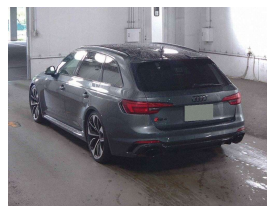
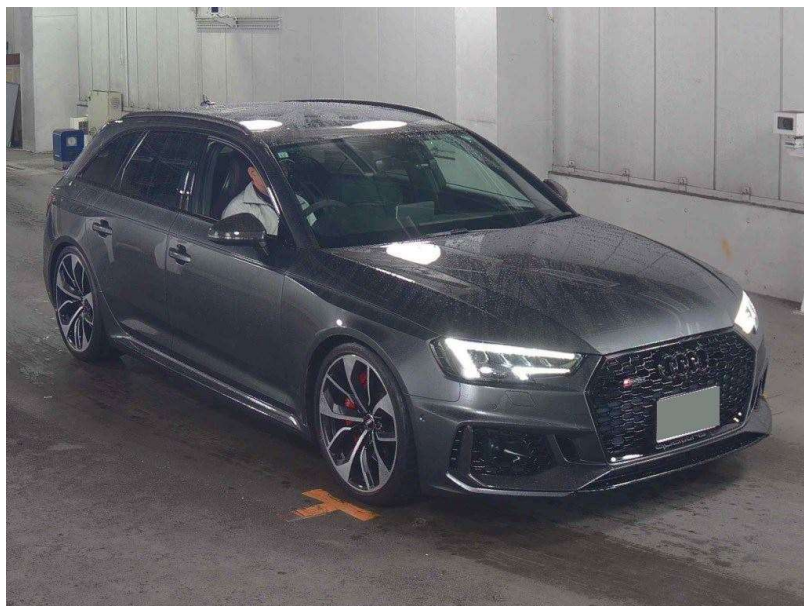


# 2019 Audi RS4 Quattro 2.9T New Shape Avant



## VEHICLE INFORMATION

### Cash Price

Includes GST,  
Registration &  
Licensing

**\$79,995**

Finance this vehicle  
from only

**\$285.45**

per week\*

Total Amount Payable  
\$98,216.25



Gain peace of mind  
with Mechanical  
Breakdown Insurance.  
Ask us how.

### Body

5 door, Station Wagon

### Odometer

54,000 km

### Engine

2900 cc, Twin Turbo

### Fuel Type

-

### Transmission

8 Speed Automatic, 4WD

### Wheels

20.0000"

### VIN

WAUZZZF46KA903426

### Reg No.

-

### Ext Colour

Daytona Grey

### History

Ex-Overseas

### Seats

5 seats

### Interior

Black Leather RS Sports Seats

### Audio

-

### Stock ID

14253

2019 Audi RS4 Quattro 2.9T New Shape Black Edition Avant, Attractive Daytona Grey Metallic with Black Valcona RS Leather Seats with Red Stitching detail, Exterior Carbon Package- Front and Rear, A 331KW 4WD Twin-Turbo Wagon rocketship fitted with 20" 5-Spoke Forged RS4 Sports Alloys and Red Brake Calipers, 360 Cameras, RS Design and Assistance Package, Dynamic Ride Control, Heated/Massaging Leather Sports Seats, Radar Cruise Control, Upgraded Alcantara Steering Wheel option, Alcantara Interior trims, Upgraded Bang and Olufsen Sound System, Apple Car Play/Audi MMI/CD/Stereo/Bluetooth/NZ Navigation, LED Matrix Lighting, Full Virtual Dash, LED Lighting, Full Electrics etc. One of Audi's best performance Wagons!

**christchurch european** | the european specialists

Phone 03 366 8328, Email [sales@christchurcheuropean.co.nz](mailto:sales@christchurcheuropean.co.nz)  
511 Blenheim Road, Sockburn, Christchurch 8042, New Zealand  
[www.christchurcheuropean.co.nz](http://www.christchurcheuropean.co.nz)

Niki Mills - 021 353 315  
Paul Mills - 022 536 0868  
Josh Giles - 021 087 54777

\* Finance calculation based on a 60 month term, 30% deposit and with an example annual fixed interest rate of 10.95%. Actual interest rate may be higher or lower. Includes an establishment fee of \$500.00 and a monthly maintenance fee of \$10.00. Full term total amount payable of \$98,216.25. Estimate only, not an offer of finance. Terms, conditions and lending criteria apply.