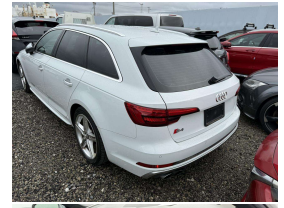
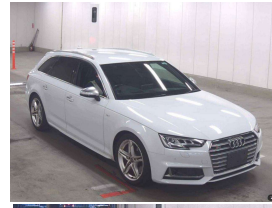


# 2017 Audi S4 3.0TFSI Quattro Avant



## VEHICLE INFORMATION

### Cash Price

Includes GST,  
Registration &  
Licensing

**\$42,995**

Finance this vehicle  
from only

**\$159.19**

per week\*

Total Amount Payable

**\$54,288.27**



Gain peace of mind  
with Mechanical  
Breakdown Insurance.  
Ask us how.

### Body

5 door, Station Wagon

### Odometer

87,000 km

### Engine

3000 cc, Internal Combustion

### Fuel Type

Petrol

### Transmission

8 Speed Automatic, Quattro AWD

### Wheels

18.0000"

### VIN

WAUZZZF40HA101408

### Reg No.

-

### Ext Colour

Pearl White

### History

Ex-Overseas

### Seats

5 seats

### Interior

Black Leather Diamond Stitched

### Audio

-

### Stock ID

14686

2017 Audi S4 Turbo Quattro Avant New Model, New Model fully revised B9 generation Audi Turbo S4!, Attractive Pear White Metallic with Black Nappa S4 Sports Leather Seats, 18 inch Audi Sports Alloys, Added Tech Pack with Audi Virtual Cockpit and NZ NAV/Bluetooth Phone and Music Streaming/AUX/Reverse Camera, Bang & Olufsen Sound, LED Matrix Lighting, Heads Up Display, Radar Adaptive Cruise Control, Electric/Memory/Heated and Massage Seats, Carbon interior inlays, 8 Speed Auto, Privacy Glass, Premium Sound System, LED DRL Exterior Lighting, Apple Car Play, Full Electrics etc. A hot looking S4 Wagon!.

Arriving Soon, Small holding deposit will secure this vehicle.

**christchurch european** | the european specialists

Phone 03 366 8328, Email [sales@christchurcheruropean.co.nz](mailto:sales@christchurcheruropean.co.nz)  
511 Blenheim Road, Sockburn, Christchurch 8042, New Zealand  
[www.christchurcheruropean.co.nz](http://www.christchurcheruropean.co.nz)

Niki Mills - 021 353 315  
Paul Mills - 022 536 0868  
Josh Giles - 021 087 54777

\* Finance calculation based on a 60 month term, 30% deposit and with an example annual fixed interest rate of 11.95%. Actual interest rate may be higher or lower. Includes an establishment fee of \$500.00 and a monthly maintenance fee of \$10.00. Full term total amount payable of \$54,288.27. Estimate only, not an offer of finance. Terms, conditions and lending criteria apply.