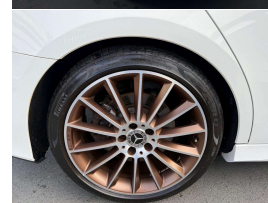


2019 Mercedes-Benz A 250 AMG 4Matic Edition 1



VEHICLE INFORMATION

Cash Price

Includes GST,
Registration &
Licensing

\$39,995

Finance this vehicle
from only

\$145.12

per week*

Total Amount Payable
\$49,730.86



Body

4 door, Sedan

Odometer

42,000 km

Engine

2000 cc

Fuel Type

Petrol

Transmission

9 Speed Automatic, 4WD

Wheels

19.0000"

VIN

WDD1771472W015998

Reg No.

-

Ext Colour

White

History

-

Seats

5 seats

Interior

Black Part Leather/Alcantara

Audio

-

Stock ID

13332



Gain peace of mind
with Mechanical
Breakdown Insurance.
Ask us how.

2019 Mercedes Benz A 250 AMG Line Edition 1 Sedan, Just 42,000kms from new!, Unique in White with 19 inch AMG Line 'Rose Gold' Sports Alloys, Black Part Leather/Alcantara Sports Seats, 9 Speed Automatic, Privacy Glass, Electric/Heated Seats, Full Digital Widescreen Cockpit with Bluetooth Phone and Music, Apple Car Play, 360 Cameras, Android Audio, AUX etc. Multiple Airbags, Edition 1 Body detailing, 2.0 Turbcharged performance, Radar Adaptive Cruise Control, Climate Air, ABS/ESP, Full Electrics etc. Late model, Low Kms and a very good look!

christchurch european | the european specialists

Phone 03 366 8328, Email sales@christchurcheruropean.co.nz
511 Blenheim Road, Sockburn, Christchurch 8042, New Zealand
www.christchurcheruropean.co.nz

Niki Mills - 021 353 315
Paul Mills - 022 536 0868
Josh Giles - 021 087 54777

* Finance calculation based on a 60 month term, 30% deposit and with an example annual fixed interest rate of 10.95%. Actual interest rate may be higher or lower. Includes an establishment fee of \$500.00 and a monthly maintenance fee of \$10.00. Full term total amount payable of \$49,730.86. Estimate only, not an offer of finance. Terms, conditions and lending criteria apply.