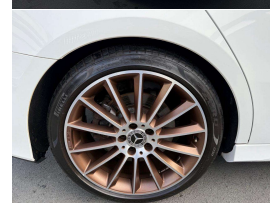


# 2019 Mercedes-Benz A 250 AMG 4Matic Edition 1



## VEHICLE INFORMATION

### Cash Price

Includes GST,  
Registration &  
Licensing

**\$39,995**

Finance this vehicle  
from only

**\$145.12**

per week\*

Total Amount Payable

**\$49,730.86**



### Body

4 door, Sedan

### Odometer

42,000 km

### Engine

2000 cc

### Fuel Type

Petrol

### Transmission

9 Speed Automatic, 4WD

### Wheels

19.0000"

### VIN

WDD1771472W015998

### Reg No.

-

### Ext Colour

White

### History

-

### Seats

5 seats

### Interior

Black Part Leather/Alcantara

### Audio

-

### Stock ID

13332



Gain peace of mind  
with Mechanical  
Breakdown Insurance.  
Ask us how.

2019 Mercedes Benz A 250 AMG Line Edition 1 Sedan, Just 42,000kms from new!, Unique in White with 19 inch AMG Line 'Rose Gold' Sports Alloys, Black Part Leather/Alcantara Sports Seats, 9 Speed Automatic, Privacy Glass, Electric/Heated Seats, Full Digital Widescreen Cockpit with Bluetooth Phone and Music, Apple Car Play, 360 Cameras, Android Audio, AUX etc. Multiple Airbags, Edition 1 Body detailing, 2.0 Turbcharged performance, Radar Adaptive Cruise Control, Climate Air, ABS/ESP, Full Electrics etc. Late model, Low Kms and a very good look!

**christchurch european** | the european specialists

Phone 03 366 8328, Email [sales@christchurcheruropean.co.nz](mailto:sales@christchurcheruropean.co.nz)  
511 Blenheim Road, Sockburn, Christchurch 8042, New Zealand  
[www.christchurcheruropean.co.nz](http://www.christchurcheruropean.co.nz)

Niki Mills - 021 353 315  
Paul Mills - 022 536 0868  
Josh Giles - 021 087 54777

\* Finance calculation based on a 60 month term, 30% deposit and with an example annual fixed interest rate of 10.95%. Actual interest rate may be higher or lower. Includes an establishment fee of \$500.00 and a monthly maintenance fee of \$10.00. Full term total amount payable of \$49,730.86. Estimate only, not an offer of finance. Terms, conditions and lending criteria apply.