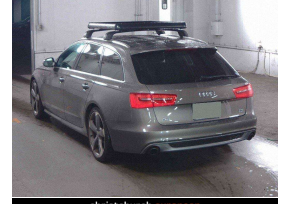
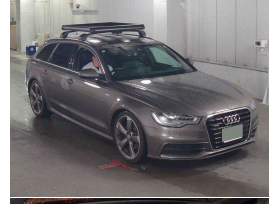


# 2015 Audi A6 2.8 V6 S Line Plus Quattro Avant



## VEHICLE INFORMATION

### Cash Price

Includes GST,  
Registration &  
Licensing

**\$29,995**

Finance this vehicle  
from only

**\$110.04**

per week\*

Total Amount Payable

**\$37,609.51**



Gain peace of mind  
with Mechanical  
Breakdown Insurance.  
Ask us how.

### Body

5 door, Station Wagon

### Odometer

86,000 km

### Engine

2800 cc

### Fuel Type

Petrol

### Transmission

Automatic, Quattro AWD

### Wheels

20.0000"

### VIN

WAUZZZ4G2EN181957

### Reg No.

-

### Ext Colour

Grey Metallic

### History

-

### Seats

5 seats

### Interior

Black Leather S Line Sports

### Audio

-

### Stock ID

13659

2015 Audi A6 2.8 V6 S Line Quattro Plus Avant, Grade 4.5/5 vehicle, Attractive newer shape A6 Wagon, Upgraded 20 inch Factory Rota RS Sports Alloys in Grey, Roof Rails and Racks fitted, Full Leather S Line Sports interior with Heated/Electric Seats, Titanium inlays, Privacy Glass, Push Button Start, Electric Tailgate, Revised Audi MMI with NZ NAV/AUX/Bluetooth Phone and Music/Reverse Camera, LED Lighting, Multiple Airbags, BOSE Surround Audio, Cruise Control, Full Electrics etc. Always very popular in the A6 Wagon format and set for the Ski Season!

Arriving Soon, Small holding deposit will secure this vehicle pre-arrival.

**christchurch european** | the european specialists

Phone 03 366 8328, Email [sales@christchurcheruropean.co.nz](mailto:sales@christchurcheruropean.co.nz)  
511 Blenheim Road, Sockburn, Christchurch 8042, New Zealand  
[www.christchurcheruropean.co.nz](http://www.christchurcheruropean.co.nz)

Niki Mills - 021 353 315  
Paul Mills - 022 536 0868  
Josh Giles - 021 087 54777

\* Finance calculation based on a 60 month term, 30% deposit and with an example annual fixed interest rate of 10.95%. Actual interest rate may be higher or lower. Includes an establishment fee of \$500.00 and a monthly maintenance fee of \$10.00. Full term total amount payable of \$37,609.51. Estimate only, not an offer of finance. Terms, conditions and lending criteria apply.