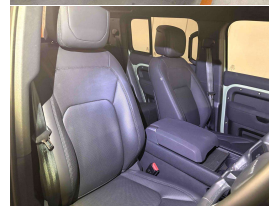
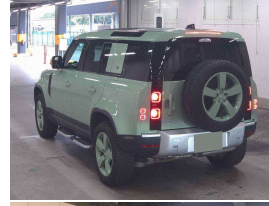


# 2023 Land Rover Defender 110 D300 75th



## VEHICLE INFORMATION

### Cash Price

Includes GST,  
Registration &  
Licensing

**\$119,995**

Finance this vehicle  
from only

**\$435.56**

per week\*

Total Amount Payable

**\$149,245.12**



Gain peace of mind  
with Mechanical  
Breakdown Insurance.  
Ask us how.

### Body

5 door, SUV / 4x4

### Odometer

49,000 km

### Engine

3000 cc, Internal Combustion

### Fuel Type

Diesel

### Transmission

8 Speed Automatic, 4WD

### Wheels

20.0000"

### VIN

SALEA7AW7P2218484

### Reg No.

-

### Ext Colour

Grasmere Green

### History

Ex-Overseas

### Seats

5 seats

### Interior

Black Leather Comfort Seats

### Audio

-

### Stock ID

14852

2023 Land Rover Defender 110 D300 Special Edition 75th Anniversary, 1 of 150 Built in Heritage Grasmere Green, 2023MY Facelift Large Pivi Screen model, Premium HSE Black Leather Seats, 20 inch Land Rover Sports Alloys Colour Matched in Grasmere Green, Panoramic Canvas Opening Sunroof, Heated/Cooling and Electric Seats, Heated Steering Wheel, Heads Up Display, Radar Adaptive Cruise Control, Ambient Lighting, Matrix LED Headlights, Roof Rails, Air Suspension, 3D Surround Cameras, Rubber Mats set, Touch Screen NZ NAV/Bluetooth Phone and Music/Apple Car Play USBs, Full Electrics and more. If you know the History you will understand the significance of this look, one very special Defender here!

**christchurch european**

**the european specialists**

Phone 03 366 8328, Email [sales@christchurcheuropean.co.nz](mailto:sales@christchurcheuropean.co.nz)  
511 Blenheim Road, Sockburn, Christchurch 8042, New Zealand  
[www.christchurcheuropean.co.nz](http://www.christchurcheuropean.co.nz)

Niki Mills - 021 353 315  
Paul Mills - 022 536 0868  
Josh Giles - 021 087 54777

\* Finance calculation based on a 60 month term, 30% deposit and with an example annual fixed interest rate of 11.95%. Actual interest rate may be higher or lower. Includes an establishment fee of \$500.00 and a monthly maintenance fee of \$10.00. Full term total amount payable of \$149,245.12. Estimate only, not an offer of finance. Terms, conditions and lending criteria apply.