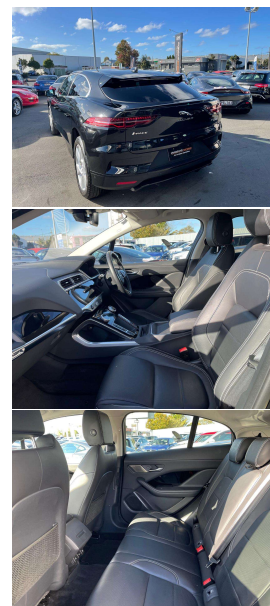
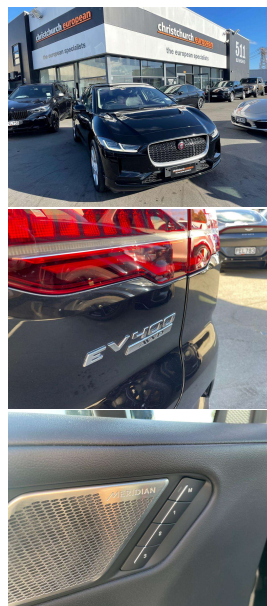


2019 Jaguar I-Pace 400PS EV AWD



VEHICLE INFORMATION

Cash Price

Includes GST,
Registration &
Licensing

\$59,995

Finance this vehicle
from only

\$215.29

per week*

Total Amount Payable
\$73,973.55



Gain peace of mind
with Mechanical
Breakdown Insurance.
Ask us how.

Body

5 door, Hatchback

Odometer

20,000 km

Engine

0 cc

Fuel Type

Electric

Transmission

Automatic

Wheels

18.0000"

VIN

SADHA2A10L1F88264

Reg No.

-

Ext Colour

Black Metallic

History

-

Seats

5 seats

Interior

Black Leather

Audio

-

Stock ID

10838

2019 Jaguar I-Pace 400PS EV AWD, Ultimate Black Metallic with Black Leather Seats, Factory Sports Alloys, LED Matrix Lighting, Heated Seats and Heated Steering Wheel, Radar Cruise Control, Lane Keep Assist, Touch Screen NZ NAV/CD/AUX/Bluetooth Phone and Music Streaming and Reverse Camera, Apple Car Play, Full Park Assist, Dual Motor AWD, Multiple Airbags, Full Electrics etc. Up to 470kms range on a full charge!. One of the best Luxury EVs on the marketplace.

Note- Factory recalls completed by Archibald's Jaguar.

christchurch european | the european specialists

Phone 03 366 8328, Email sales@christchurch-european.co.nz
511 Blenheim Road, Sockburn, Christchurch 8042, New Zealand
www.christchurch-european.co.nz

Niki Mills - 021 353 315
Paul Mills - 022 536 0868
Josh Giles - 021 087 54777

* Finance calculation based on a 60 month term, 30% deposit and with an example annual fixed interest rate of 10.95%. Actual interest rate may be higher or lower. Includes an establishment fee of \$500.00 and a monthly maintenance fee of \$10.00. Full term total amount payable of \$73,973.55. Estimate only, not an offer of finance. Terms, conditions and lending criteria apply.