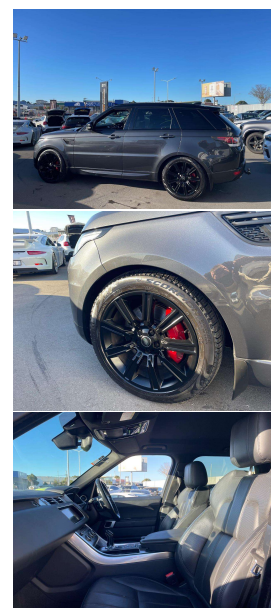


# 2017 Land Rover Range Rover Sport 4.4 SDV8 HSE



## VEHICLE INFORMATION

### Cash Price

Includes GST,  
Registration &  
Licensing

# \$59,995

Finance this vehicle  
from only

# \$206.68

per week\*

Total Amount Payable

\$71,735.66

finance  
**NOW**

### Body

5 door, SUV

### Odometer

182,000 km

### Engine

4400 cc, SDV8

### Fuel Type

Diesel

### Transmission

8 Speed Automatic, 4WD

### Wheels

21.0000"

### VIN

-

### Reg No.

QPK617

### Ext Colour

Carpathian Dark Grey Metallic

### History

-

### Seats

5 seats

### Interior

Black Leather

### Audio

-

### Stock ID

12483



Gain peace of mind  
with Mechanical  
Breakdown Insurance.  
Ask us how.

2017 Range Rover Sport 4.4 SDV8 HSE Dynamic Facelift Widescreen, NZ New vehicle with Full Service History, Carpathian Dark Grey Metallic with 21 inch Black HSE Sports Alloys, Full Black Styling Package with Black Grills and Badges, Privacy Glass, Air Suspension with 4WD Terrain response, Mudflaps fitted, Added Roof Rails, LED Lighting, HSE Dynamic Handling Control, Brembo Brakes with Red Brake Calipers, Titanium inlays, Front and Rear Heated Seats, 17MY Facelift Infotainment Widescreen with Bluetooth Phone and Music Streaming, Updated NZ Maps, Ambient Lighting, Cameras etc. Remote Locking, Multiple Airbags, Full Electrics etc. The best Diesel engine in one of the best colours!

**christchurch european**

the european specialists

Phone 03 366 8328, Email [sales@christchurcheruropean.co.nz](mailto:sales@christchurcheruropean.co.nz)  
511 Blenheim Road, Sockburn, Christchurch 8042, New Zealand  
[www.christchurcheruropean.co.nz](http://www.christchurcheruropean.co.nz)

Niki Mills - 021 353 315  
Paul Mills - 022 536 0868  
Michael Mills - 022 043 3700

\* Finance calculation based on a 60 month term, 30% deposit and with an example annual fixed interest rate of 9.95%. Actual interest rate may be higher or lower. Includes an establishment fee of \$205.00. Full term total amount payable of \$71,735.66. Estimate only, not an offer of finance. Terms, conditions and lending criteria apply.