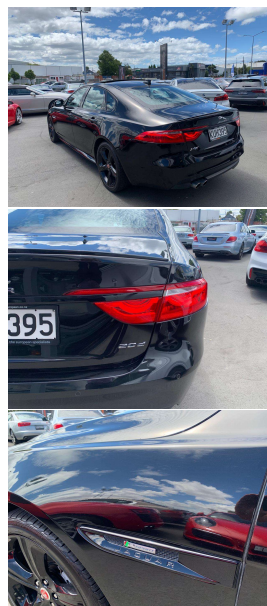


# 2017 Jaguar XF 2.0d R Sport New Shape Sedan



## VEHICLE INFORMATION

### Cash Price

Includes GST,  
Registration &  
Licensing

**\$22,995**

Finance this vehicle  
from only

**\$85.48**

per week\*

Total Amount Payable

**\$29,124.57**



Gain peace of mind  
with Mechanical  
Breakdown Insurance.  
Ask us how.

### Body

5 door, Sedan

### Odometer

151,000 km

### Engine

2000 cc

### Fuel Type

Diesel

### Transmission

8 Speed Automatic

### Wheels

19.0000"

### VIN

-

### Reg No.

REF196

### Ext Colour

Black Metallic

### History

-

### Seats

5 seats

### Interior

Black Leather

### Audio

-

### Stock ID

13718

2017 Jaguar XF 2.0d 8 Speed R-Sport New Shape Sedan, NZ New vehicle!, Attractive Black Metallic on Black Leather with 20 inch Gloss Black R-Sports Alloys, Added Glass Sunroof, Factory Black Package R-Sport Body Styling and Interior, Heated/Electric Seats, Push Button Start, Touch Screen NZ NAV/CD/AUX/Bluetooth Phone and Music and Reverse Camera, LED Lighting, Black Grill detailing, Rear lip spoiler, Dark Piano Wood inlays, Multiple Airbags, Climate Air, Full Electrics etc. Late model, Very economical and a good looking Jaguar XF at this price range!.

**christchurch european** | the european specialists

Phone 03 366 8328, Email [sales@christchurcheuropean.co.nz](mailto:sales@christchurcheuropean.co.nz)  
511 Blenheim Road, Sockburn, Christchurch 8042, New Zealand  
[www.christchurcheuropean.co.nz](http://www.christchurcheuropean.co.nz)

Niki Mills - 021 353 315  
Paul Mills - 022 536 0868  
Josh Giles - 021 087 54777

\* Finance calculation based on a 60 month term, 30% deposit and with an example annual fixed interest rate of 10.95%. Actual interest rate may be higher or lower. Includes an establishment fee of \$500.00 and a monthly maintenance fee of \$10.00. Full term total amount payable of \$29,124.57. Estimate only, not an offer of finance. Terms, conditions and lending criteria apply.