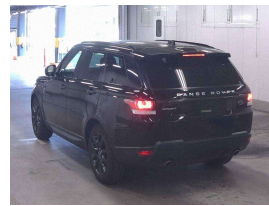
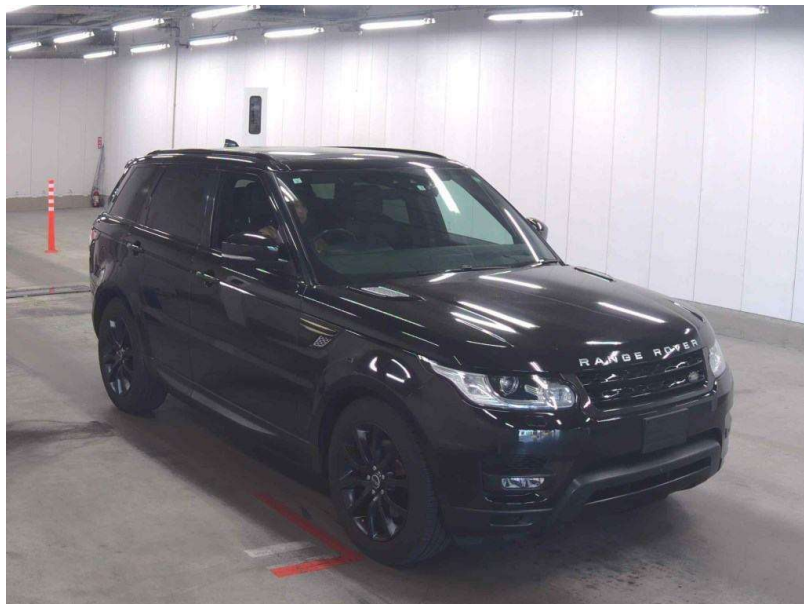


# 2017 Land Rover Range Rover Sport V6



## VEHICLE INFORMATION

### Cash Price

Includes GST,  
Registration &  
Licensing

**\$54,995**

Finance this vehicle  
from only

**\$197.75**

per week\*

Total Amount Payable

**\$67,912.88**



### Body

5 door, SUV / 4x4

### Odometer

84,000 km

### Engine

3000 cc, V6 Supercharged

### Fuel Type

Petrol

### Transmission

8 Speed Automatic, 4WD

### Wheels

20.0000"

### VIN

SALWA2EV8HA667503

### Reg No.

-

### Ext Colour

Santorini Black

### History

-

### Seats

5 seats

### Interior

Black Leather

### Audio

-

### Stock ID

13738



Gain peace of mind  
with Mechanical  
Breakdown Insurance.  
Ask us how.

2017 Range Rover Sport SE 3.0 V6 Supercharged Facelift, 2017 MY Facelift Sport with revised Widescreen infotainment, 20" Factory Sports Alloys in Black, Premium Leather Seats with Heating, Heated Steering Wheel, Push Button Start, Radar Adaptive Cruise Control, Privacy Glass, Lane Assist monitors, Touch Screen Widescreen NZ NAV/CD/AUX/Bluetooth Streaming/USBs/Car Play, Air Suspension, Woodgrain inlays, Full Electrics etc. A very good looking Range Rover Sport!

Arriving Soon, Small holding deposit will secure this vehicle pre-arrival.

**christchurch european | the european specialists**

Phone 03 366 8328, Email [sales@christchurcheruropean.co.nz](mailto:sales@christchurcheruropean.co.nz)  
511 Blenheim Road, Sockburn, Christchurch 8042, New Zealand  
[www.christchurcheruropean.co.nz](http://www.christchurcheruropean.co.nz)

Niki Mills - 021 353 315  
Paul Mills - 022 536 0868  
Josh Giles - 021 087 54777

\* Finance calculation based on a 60 month term, 30% deposit and with an example annual fixed interest rate of 10.95%. Actual interest rate may be higher or lower. Includes an establishment fee of \$500.00 and a monthly maintenance fee of \$10.00. Full term total amount payable of \$67,912.88. Estimate only, not an offer of finance. Terms, conditions and lending criteria apply.