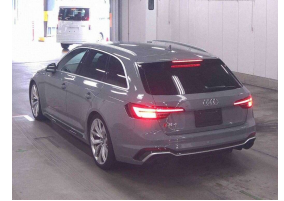
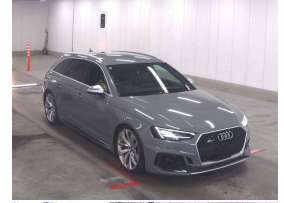


# 2019 Audi RS4 Quattro 2.9T New Shape Avant



## VEHICLE INFORMATION

### Cash Price

Includes GST,  
Registration &  
Licensing

**\$74,995**

Finance this vehicle  
from only

**\$274.05**

per week\*

Total Amount Payable

**\$93,750.86**



Gain peace of mind  
with Mechanical  
Breakdown Insurance.  
Ask us how.

### Body

5 door, Station Wagon

### Odometer

64,000 km

### Engine

2900 cc, Internal Combustion

### Fuel Type

Petrol

### Transmission

8 Speed Automatic, Quattro AWD

### Wheels

20.0000"

### VIN

WUAZZZF49KA900424

### Reg No.

-

### Ext Colour

Nardo Grey

### History

Ex-Overseas

### Seats

5 seats

### Interior

Black Leather Diamond Stitched

### Audio

-

### Stock ID

14926

2019 Audi RS4 Quattro Avant 2.9T Latest Model, In the very best colour- Nardo Grey!. Low Kms from new, 331KW Twi Turbo performance, 20" 5-Spoke RS Sports Alloys in Silver, Red Brake Callipers, RS Sports Suspension with Dynamic Ride Control, Carbon Styling Package, 360 Cameras, Heated/Massaging Leather RS Sports Seats, LED Matrix Lighting, Silver Exterior Package, Radar Adaptive Cruise Control, Blind Spot Monitors, Audi MMI Apple Car Play/Audi MMI/CD/Stereo/Bluetooth Streaming/NZ Navigation, Carbon interior inlays, Privacy Glass, Full Electrics etc. One of Audi's best. A very sexy car in Nardo Grey!

Arriving Soon, Small holding deposit will secure this vehicle pre-arrival.

**christchurch european** | the european specialists

Phone 03 366 8328, Email [sales@christchurcheuropean.co.nz](mailto:sales@christchurcheuropean.co.nz)  
511 Blenheim Road, Sockburn, Christchurch 8042, New Zealand  
[www.christchurcheuropean.co.nz](http://www.christchurcheuropean.co.nz)

Niki Mills - 021 353 315  
Paul Mills - 022 536 0868  
Josh Giles - 021 087 54777

\* Finance calculation based on a 60 month term, 30% deposit and with an example annual fixed interest rate of 11.95%. Actual interest rate may be higher or lower. Includes an establishment fee of \$500.00 and a monthly maintenance fee of \$10.00. Full term total amount payable of \$93,750.86. Estimate only, not an offer of finance. Terms, conditions and lending criteria apply.