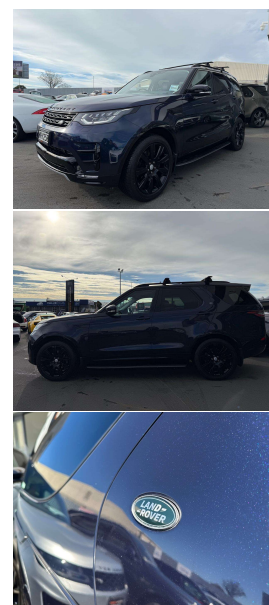
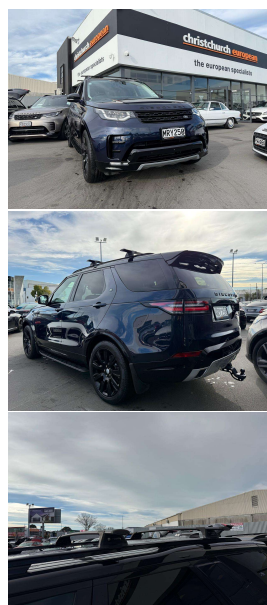


2018 Land Rover Discovery 5 HSE Td6 Dynamic 7



VEHICLE INFORMATION

Cash Price

Includes GST,
Registration &
Licensing

\$64,995

Finance this vehicle
from only

\$232.83

per week*

Total Amount Payable
\$80,034.23



Body

5 door, RV/SUV

Odometer

99,000 km

Engine

3000 cc

Fuel Type

Diesel

Transmission

8 Speed Auto, 4WD

Wheels

21.0000"

VIN

SALRA2AK1HA030882

Reg No.

MRY250

Ext Colour

Loire Blue Metallic

History

-

Seats

7 seats

Interior

Black Leather

Audio

-

Stock ID

12339



Gain peace of mind
with Mechanical
Breakdown Insurance.
Ask us how.

2018 Land Rover Discovery 5 HSE 3.0 Td6 Dynamic 7 Seater, Only 1 NZ Owner since just 2,000kms!, Upgraded Dynamic HSE Styling package with revised Aggressive Dynamic Painted-Black Bumpers and inserts, Additional Black Grills, Upgraded 21 inch Black Sports Alloys, Roof Rails and Roof Racks fitted, Running Boards fitted, Black Roof etc. Full Leather, Heated/Electric Seats, Mudflaps, 7 Seats, Air Suspension, LED Lighting, Privacy Glass, Touch Screen Bluetooth Phone and Music/CD/AUX/USB/NZ Navigation, Surround Camera System, Push Button Start, Climate Air, Towbar fitted, Full Electrics etc. A very popular 7 Seater on NZ roads today!

christchurch european | the european specialists

Phone 03 366 8328, Email sales@christchurcheuropean.co.nz
511 Blenheim Road, Sockburn, Christchurch 8042, New Zealand
www.christchurcheuropean.co.nz

Niki Mills - 021 353 315
Paul Mills - 022 536 0868
Josh Giles - 021 087 54777

* Finance calculation based on a 60 month term, 30% deposit and with an example annual fixed interest rate of 10.95%. Actual interest rate may be higher or lower. Includes an establishment fee of \$500.00 and a monthly maintenance fee of \$10.00. Full term total amount payable of \$80,034.23. Estimate only, not an offer of finance. Terms, conditions and lending criteria apply.