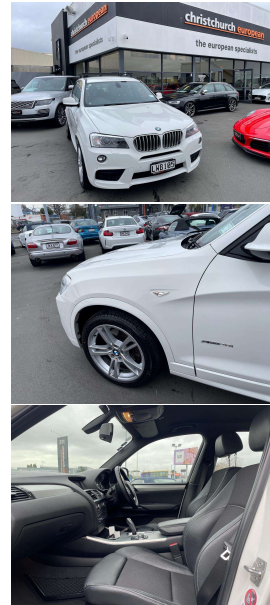


# 2011 BMW X3 3.0 XDrive Motorsport New Shape



## VEHICLE INFORMATION

### Cash Price

Includes GST,  
Registration &  
Licensing

**\$17,995**

Finance this vehicle  
from only

**\$67.94**

per week\*

Total Amount Payable  
\$23,063.89



Gain peace of mind  
with Mechanical  
Breakdown Insurance.  
Ask us how.

### Body

5 door, RV/SUV

### Odometer

153,000 km

### Engine

3000 cc, Internal Combustion

### Fuel Type

Petrol

### Transmission

8 Speed Auto, 4WD

### Wheels

18.0000"

### VIN

WBAWX52070L398156

### Reg No.

LWB105

### Ext Colour

Alpine White

### History

Ex-Overseas

### Seats

5 seats

### Interior

Black Part Leather

### Audio

-

### Stock ID

14405

2011 BMW X3 3.0 X-Drive New Shape Motorsport, A very popular model!, New Generation larger X3 with revised styling/8 Speed Gearbox and improved I-Drive system, Factory Motorsport with additional lower colour-coding, Part Leather Motorsport Seating and Titanium inlays, Electric Seats, LED Lighting, NZ Navigation with CD/AUX/Stereo and 360 Cameras, Roof rails and Roof Rack's fitted, Towbar fitted, Privacy Glass, Remote Locking, Multiple Airbags, Push Button Start etc. Economical, Modern and practical mid-size 4WD!.

**christchurch european** | the european specialists

Phone 03 366 8328, Email [sales@christchurcheruropean.co.nz](mailto:sales@christchurcheruropean.co.nz)  
511 Blenheim Road, Sockburn, Christchurch 8042, New Zealand  
[www.christchurcheruropean.co.nz](http://www.christchurcheruropean.co.nz)

Niki Mills - 021 353 315  
Paul Mills - 022 536 0868  
Josh Giles - 021 087 54777

\* Finance calculation based on a 60 month term, 30% deposit and with an example annual fixed interest rate of 10.95%. Actual interest rate may be higher or lower. Includes an establishment fee of \$500.00 and a monthly maintenance fee of \$10.00. Full term total amount payable of \$23,063.89. Estimate only, not an offer of finance. Terms, conditions and lending criteria apply.