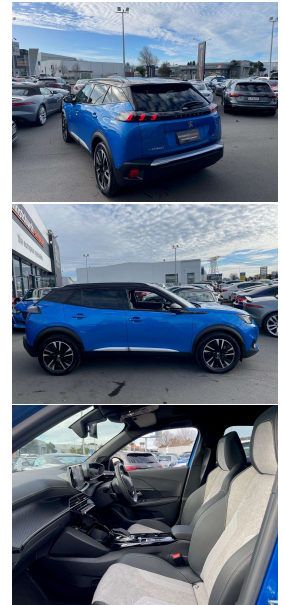
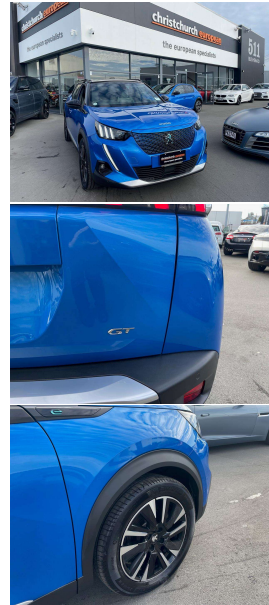


2022 Peugeot e-2008 GT Line Electric



VEHICLE INFORMATION

Cash Price

Includes GST,
Registration &
Licensing

\$44,995

Finance this vehicle
from only

\$155.26

per week*

Total Amount Payable

\$53,865.51

finance
NOW



Gain peace of mind
with Mechanical
Breakdown Insurance.
Ask us how.

Body

5 door, RV/SUV

Odometer

500 km

Engine

0 cc

Fuel Type

Electric

Transmission

Automatic

Wheels

18.0000"

VIN

-

Reg No.

QHR263

Ext Colour

Blue Metallic

History

-

Seats

5 seats

Interior

Black/Cream Part Leather

Audio

-

Stock ID

11919

2022 Peugeot e-2008 GT Line Full-Electric SUV, Peugeot's Fully Electric Zero-Emissions Luxury mid-size SUV with a 5 kWh Battery for up to 320 kms range on a full charge! As new car-just 500kms from new! Factory 18 inch Polished Sports Alloys, Distinctive LED Running Lights, Added Glass Sunroof, Radar Cruise Control, Privacy Glass, Part Leather/Velour GT Line Sports Seats, Lane Assist, Heated Seats, Full Digital Cockpit with Bluetooth Phone and Music/Apple Car Play/360 Cameras, Wireless Phone Charge pad, Multiple Airbags, ABS, Full Electrics etc. A very popular and practical size EV designed for the future!

Factory 8 Year/100,000kms Worldwide Peugeot Battery Warranty cover applies.

christchurch european | the european specialists

Phone 03 366 8328, Email sales@christchurcheruropean.co.nz
511 Blenheim Road, Sockburn, Christchurch 8042, New Zealand
www.christchurcheruropean.co.nz

Niki Mills - 021 353 315
Paul Mills - 022 536 0868
Michael Mills - 022 043 3700

* Finance calculation based on a 60 month term, 30% deposit and with an example annual fixed interest rate of 9.95%. Actual interest rate may be higher or lower. Includes an establishment fee of \$205.00. Full term total amount payable of \$53,865.51. Estimate only, not an offer of finance. Terms, conditions and lending criteria apply.