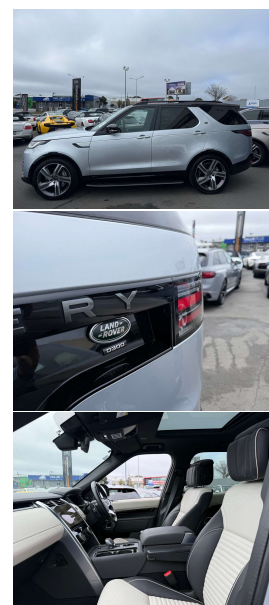
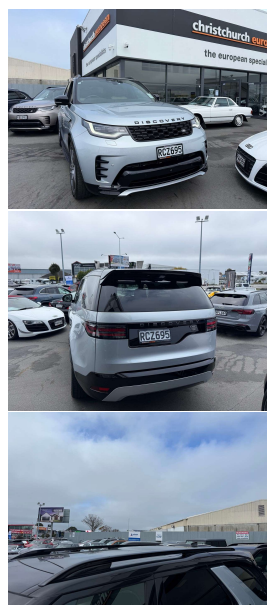


# 2022 Land Rover Discovery 5 D300 HSE R-Dynamic



## VEHICLE INFORMATION

### Cash Price

Includes GST,  
Registration &  
Licensing

**\$119,995**

Finance this vehicle  
from only

**\$425.78**

per week\*

Total Amount Payable

**\$146,701.64**

finance  
**NOW**

### Body

5 door, RV/SUV

### Odometer

15,000 km

### Engine

3000 cc

### Fuel Type

Diesel

### Transmission

8 Speed Automatic, 4WD

### Wheels

22.0000"

### VIN

-

### Reg No.

RCZ695

### Ext Colour

Habuka Silver Metallic

### History

-

### Seats

7 seats

### Interior

Black/Cream Two Tone Leather

### Audio

-

### Stock ID

13631



Gain peace of mind  
with Mechanical  
Breakdown Insurance.  
Ask us how.

2022 Land Rover Discovery 5 HSE D300 Diesel R-Dynamic New Model, Just 15,000kms from new, New Generation D300/650NM Discovery with multiple exterior/interior upgrades, Easy care Habuka Silver Metallic with extended Black/Cream Luxury Leather package, 22 inch Diamond Finish Sports Alloys, Sliding Panoramic Glass Roof, Black Roof Rails, Heated and Cooling Seats, Heated Rear Seats, Running Boards fitted, Radar Adaptive Cruise Control, 4 Zone Climate Air, Black Exterior Styling Package, 360 Surround Camera Package, Widescreen revised Virtual Pivi-Pro Dash Cluster with NZ NAV/BT/AUX/USBs/In-Control Aps/Car Play, Air Suspension, Full Electrics etc. Still the ultimate go-anywhere Luxury 7 Seater!

**christchurch european** | the european specialists

Phone 03 366 8328, Email [sales@christchurcheuropean.co.nz](mailto:sales@christchurcheuropean.co.nz)  
511 Blenheim Road, Sockburn, Christchurch 8042, New Zealand  
[www.christchurcheuropean.co.nz](http://www.christchurcheuropean.co.nz)

Niki Mills - 021 353 315  
Paul Mills - 022 536 0868  
Josh Giles - 021 087 54777

\* Finance calculation based on a 60 month term, 30% deposit and with an example annual fixed interest rate of 10.95%. Actual interest rate may be higher or lower. Includes an establishment fee of \$500.00 and a monthly maintenance fee of \$10.00. Full term total amount payable of \$146,701.64. Estimate only, not an offer of finance. Terms, conditions and lending criteria apply.