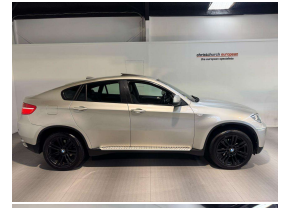


2012 BMW X6 35i X-Drive Turbo



VEHICLE INFORMATION

Cash Price

Includes GST,
Registration &
Licensing

\$24,995

Finance this vehicle
from only

\$94.58

per week*

Total Amount Payable

\$32,090.56



Gain peace of mind
with Mechanical
Breakdown Insurance.
Ask us how.

Body

5 door, SUV / 4x4

Odometer

94,000 km

Engine

3000 cc, Internal Combustion

Fuel Type

Petrol

Transmission

Automatic, 4WD

Wheels

20.0000"

VIN

WBAFG22030L596456

Reg No.

PKL787

Ext Colour

Champagne

History

Ex-Overseas

Seats

5 seats

Interior

Black Leather Comfort Seats

Audio

-

Stock ID

14425

2012 BMW X6 35i X-Drive Diesel, Attractive Champagne Metallic with added Black-Pack 20 inch Sports Alloys, Added Running Boards, Privacy Glass, Full Leather, 8 Speed Automatic, Revised BMW I-Drive CD/Stereo/AUX, Silver Titanium inlays, Soft-Close Doors, Towbar Fitted, Heads-up Display, Sunroof, Push Button Start, Climate Air, Cruise Control, ABS Brakes, Full Electrics, Detachable Towbar, Auto Lights, Auto Wipers, Paddleshift, 5 Seats etc. A hot looking BMW 4WD which is priced to sell!

christchurch european | the european specialists

Phone 03 366 8328, Email sales@christchurcheruropean.co.nz
511 Blenheim Road, Sockburn, Christchurch 8042, New Zealand
www.christchurcheruropean.co.nz

Niki Mills - 021 353 315
Paul Mills - 022 536 0868
Josh Giles - 021 087 54777

* Finance calculation based on a 60 month term, 30% deposit and with an example annual fixed interest rate of 11.95%. Actual interest rate may be higher or lower. Includes an establishment fee of \$500.00 and a monthly maintenance fee of \$10.00. Full term total amount payable of \$32,090.56. Estimate only, not an offer of finance. Terms, conditions and lending criteria apply.