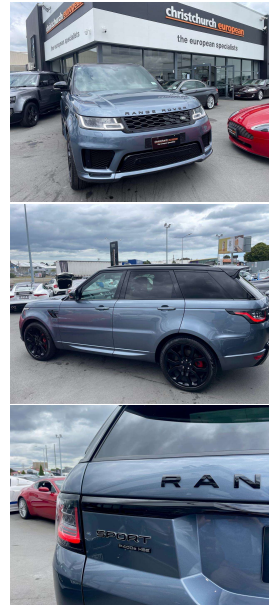


# 2018 Land Rover Range Rover Sport P400e PHEV



## VEHICLE INFORMATION

### Cash Price

Includes GST,  
Registration &  
Licensing

**\$114,995**

Finance this vehicle  
from only

**\$395.23**

per week\*

Total Amount Payable

**\$137,259.52**

finance  
**NOW**



Gain peace of mind  
with Mechanical  
Breakdown Insurance.  
Ask us how.

### Body

5 door, RV/SUV

### Odometer

67,000 km

### Engine

2000 cc

### Fuel Type

Hybrid

### Transmission

8 Speed Automatic, 4WD

### Wheels

21.0000"

### VIN

-

### Reg No.

-

### Ext Colour

Byron Blue Metallic

### History

-

### Seats

5 seats

### Interior

Black/Navy Blue HSE Leather

### Audio

-

### Stock ID

11510

2018 Range Rover Sport P400e HSE Dynamic Facelift PHEV, Sought-after PHEV Hybrid Range Rover Sport Facelift with 50kms Full-Electric Range!, Attractive Byron Blue Metallic with Two-Tone Black/Navy Blue HSE Leather, Black-Pack Exterior Pack with 22 inch Gloss Black Sports Alloys, Black Roof and added Black Roof Rails, Panoramic Glass Roof, Heads-up Display, Heated and Cooling Leather Seats, Heated Steering Wheel, Adaptive Radar Cruise Control, Virtual Dash with NZ Nav/Bluetooth/Car Play/Terrain response, Console Fridge, Privacy Glass, LED Matrix Headlights, Full Electrics etc. Electric Motoring in 4WD Luxury with NO range Anxiety here!.

Note- Home Fast Charge solutions available to be installed in conjunction with Entire Electrical Ltd (Branches

**christchurch european** | the european specialists

Phone 03 366 8328, Email [sales@christchurcheruropean.co.nz](mailto:sales@christchurcheruropean.co.nz)  
511 Blenheim Road, Sockburn, Christchurch 8042, New Zealand  
[www.christchurcheruropean.co.nz](http://www.christchurcheruropean.co.nz)

Niki Mills - 021 353 315  
Paul Mills - 022 536 0868  
Michael Mills - 022 043 3700

\* Finance calculation based on a 60 month term, 30% deposit and with an example annual fixed interest rate of 9.95%. Actual interest rate may be higher or lower. Includes an establishment fee of \$205.00. Full term total amount payable of \$137,259.52. Estimate only, not an offer of finance. Terms, conditions and lending criteria apply.