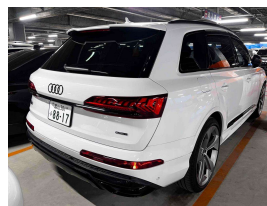
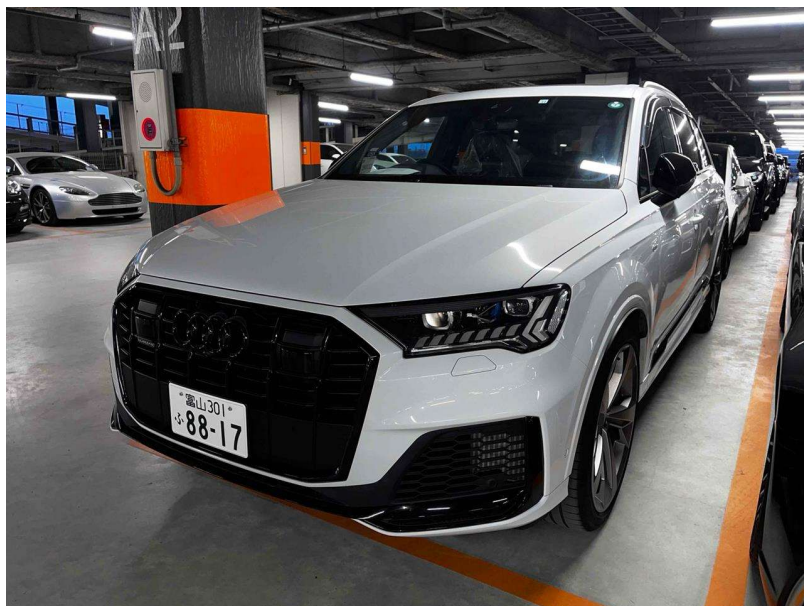


# 2022 Audi Q7 55 TFSI S Line Quattro Facelift



## VEHICLE INFORMATION

### Cash Price

Includes GST,  
Registration &  
Licensing

**\$99,995**

Finance this vehicle  
from only

**\$355.62**

per week\*

Total Amount Payable

**\$122,458.95**



### Body

5 door, RV/SUV

### Odometer

35,000 km

### Engine

3000 cc, TFSI V6

### Fuel Type

Petrol

### Transmission

8 Speed Automatic, 4WD

### Wheels

22.0000"

### VIN

WAUZZZ4M5PD001143

### Reg No.

-

### Ext Colour

White

### History

-

### Seats

7 seats, Leather

### Interior

Black Leather S Line

### Audio

-

### Stock ID

13735



Gain peace of mind  
with Mechanical  
Breakdown Insurance.  
Ask us how.

2022 Audi Q7 S-Line 55 TFSI MHEV Quattro 7 Seater, 2023MY Facelift Model just 35,000kms from new! 3.0 TFSI Mild-Hybrid V6 performance, Attractive White with Black Leather combination, Black Exterior Package, Upgraded 22 inch SQ7 Sports Alloys in Grey fitted, Heated/Electric S Line Sports Seats, Full Virtual Dash with NZ NAV/CD/AUX/Bluetooth Phone and Music Streaming/360 Cameras/Apple Car Play, Panoramic Glass Sunroof, Upgraded Matrix LED Headlights, 8 Speed Automatic, Push Button Start, Radar Adaptive Cruise Control with Lane Assist, Bang and Olufsen Audio, Air Suspension, 7 Seats, Roof Rails fitted, Privacy Glass, Climate Air, Quattro 4WD, Rear Tray, Full Electrics etc. Save significantly on list price new here for a great looking Facelift Q7!

**christchurch european** | the european specialists

Phone 03 366 8328, Email [sales@christchurcheuropean.co.nz](mailto:sales@christchurcheuropean.co.nz)  
511 Blenheim Road, Sockburn, Christchurch 8042, New Zealand  
[www.christchurcheuropean.co.nz](http://www.christchurcheuropean.co.nz)

Niki Mills - 021 353 315  
Paul Mills - 022 536 0868  
Josh Giles - 021 087 54777

\* Finance calculation based on a 60 month term, 30% deposit and with an example annual fixed interest rate of 10.95%. Actual interest rate may be higher or lower. Includes an establishment fee of \$500.00 and a monthly maintenance fee of \$10.00. Full term total amount payable of \$122,458.95. Estimate only, not an offer of finance. Terms, conditions and lending criteria apply.