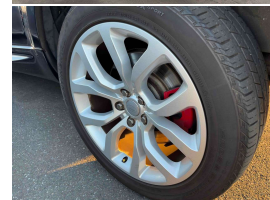
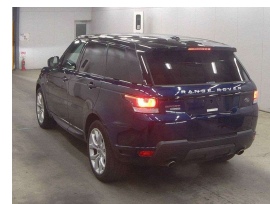
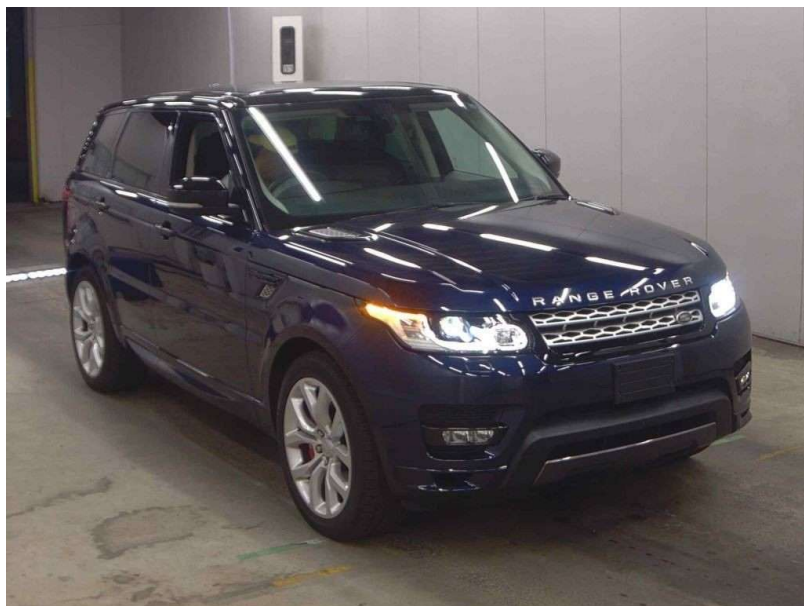


# 2017 Land Rover Range Rover Sport 5.0 V8



## VEHICLE INFORMATION

### Cash Price

Includes GST,  
Registration &  
Licensing

**\$69,995**

Finance this vehicle  
from only

**\$256.10**

per week\*

Total Amount Payable  
\$87,584.83



### Body

5 door, RV/SUV

### Odometer

26,000 km

### Engine

5000 cc, V8 Supercharged

### Fuel Type

-

### Transmission

8 Speed Automatic, 4WD

### Wheels

20.0000"

### VIN

SALWA2EE4GA110795

### Reg No.

-

### Ext Colour

Loire Blue Metallic

### History

-

### Seats

7 seats

### Interior

Espresso Premium Leather

### Audio

-

### Stock ID

13791



Gain peace of mind  
with Mechanical  
Breakdown Insurance.  
Ask us how.

2017 Range Rover Sport 5.0 V8 Supercharged Autobiography 7 Seater, Compare the value here for a 2017! Just 26,000kms from new, Attractive Loire Blue Metallic with Premium Espresso Leather, Heated/Cooling Autobiography Seats, Heated Steering Wheel, Soft-Close Doors, 21 inch Sports Alloys with Red Brake Calipers, Dual Rear DVD Screens Console Fridge, Privacy Glass, LED Lighting, Touch Screen NZ NAV/CD/AUX/360 Cameras/Bluetooth Streaming, Ambient Lighting, Air Suspension, V8 Supercharged-510HP Performance, Full Electrics etc. A unique spec and colour combination here.

Arriving Soon, Small holding deposit will secure this vehicle pre-arrival.

**christchurch european** | the european specialists

Phone 03 366 8328, Email [sales@christchurcheuropean.co.nz](mailto:sales@christchurcheuropean.co.nz)  
511 Blenheim Road, Sockburn, Christchurch 8042, New Zealand  
[www.christchurcheuropean.co.nz](http://www.christchurcheuropean.co.nz)

Niki Mills - 021 353 315  
Paul Mills - 022 536 0868  
Josh Giles - 021 087 54777

\* Finance calculation based on a 60 month term, 30% deposit and with an example annual fixed interest rate of 11.95%. Actual interest rate may be higher or lower. Includes an establishment fee of \$500.00 and a monthly maintenance fee of \$10.00. Full term total amount payable of \$87,584.83. Estimate only, not an offer of finance. Terms, conditions and lending criteria apply.