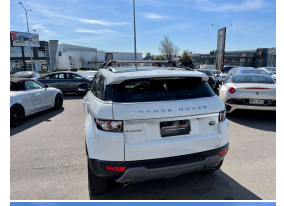
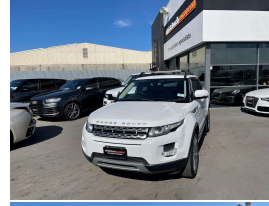


# 2012 Land Rover Range Rover Evoque 2.0T SI4



## VEHICLE INFORMATION

### Cash Price

Includes GST,  
Registration &  
Licensing

**\$24,995**

Finance this vehicle  
from only

**\$92.50**

per week\*

Total Amount Payable  
\$31,548.83



Gain peace of mind  
with Mechanical  
Breakdown Insurance.  
Ask us how.

### Body

5 door, RV/SUV

### Odometer

98,000 km

### Engine

2000 cc

### Fuel Type

Petrol

### Transmission

Automatic, 4WD

### Wheels

19.0000"

### VIN

SALVA2AG0CH631680

### Reg No.

NTN634

### Ext Colour

Fuji White

### History

-

### Seats

5 seats

### Interior

Black Leather

### Audio

-

### Stock ID

14402

2012 Range Rover Evoque 2.0T SI4 Prestige High-Spec, Fuji White with Black Premium Prestige Leather and Luxury Dark Woodgrain inlays, Factory 19" Prestige Sports Alloys, Added Factory Roof Rails and Racks, Dynamic response added, Running Boards fitted, Panoramic Glass Roof, Ambient Lighting, Touch Screen CD/Stereo/AUX/Bluetooth Phone and Music/NZ Nav, Heated Seats, Added Heated Steering Wheel, Reverse Camera, Climate Air, Rotary Gear-selector, Push Button Start, Full-time 4WD, LED Lighting, Meridian Surround Sound, Full Electrics etc. All fitted out!

**christchurch european** | the european specialists

Phone 03 366 8328, Email [sales@christchurcheruropean.co.nz](mailto:sales@christchurcheruropean.co.nz)  
511 Blenheim Road, Sockburn, Christchurch 8042, New Zealand  
[www.christchurcheruropean.co.nz](http://www.christchurcheruropean.co.nz)

Niki Mills - 021 353 315  
Paul Mills - 022 536 0868  
Josh Giles - 021 087 54777

\* Finance calculation based on a 60 month term, 30% deposit and with an example annual fixed interest rate of 10.95%. Actual interest rate may be higher or lower. Includes an establishment fee of \$500.00 and a monthly maintenance fee of \$10.00. Full term total amount payable of \$31,548.83. Estimate only, not an offer of finance. Terms, conditions and lending criteria apply.