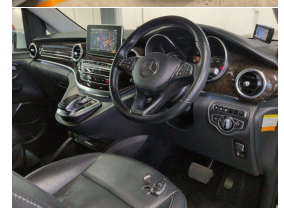
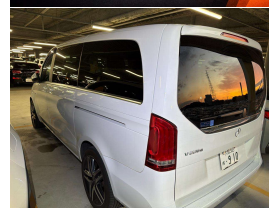
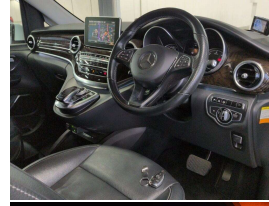


# 2015 Mercedes-Benz V 220 d Avantgarde Long



## VEHICLE INFORMATION

### Cash Price

Includes GST,  
Registration &  
Licensing

**\$49,995**

Finance this vehicle  
from only

**\$184.32**

per week\*

Total Amount Payable

**\$62,920.71**



Gain peace of mind  
with Mechanical  
Breakdown Insurance.  
Ask us how.

### Body

5 door, Van

### Odometer

70,000 km

### Engine

2200 cc, Internal Combustion

### Fuel Type

Diesel

### Transmission

7 Speed Auto

### Wheels

19.0000"

### VIN

WDF44781323985701

### Reg No.

-

### Ext Colour

White

### History

Ex-Overseas

### Seats

7 seats, Leather

### Interior

Black Leather Comfort Seats

### Audio

-

### Stock ID

14826

2015 Mercedes Benz V 220d 2.2 CDI Avantgarde Diesel Long-Wheel Base 7 Seater Van, Perfect Luxury transport option!, Easy care in White with Black Full Leather/White stitching detail, Upgraded 19 inch Factory Avantgarde Sport: Alloys, Amazing 2.2 CDI Diesel economy, Privacy Glass, Top spec Avantgarde Full Leather, Heated/Electric Seats, LED Lighting, New Generation COMAND NZ NAV/CD/Stereo/Bluetooth Phone and Music/360 Cameras, Premium Sound Audio, Radar Cruise Control, Lane Assist, Dual Electric Sliding Doors, Electric Tailgate, 7 Speed Automatic, Full Electric etc. Hard to get stock in NZ in Long Wheel Base spec.

AMG Pan-Americana Facelift Grill upgrades available.

**christchurch european** | the european specialists

Phone 03 366 8328, Email [sales@christchurcheruropean.co.nz](mailto:sales@christchurcheruropean.co.nz)  
511 Blenheim Road, Sockburn, Christchurch 8042, New Zealand  
[www.christchurcheruropean.co.nz](http://www.christchurcheruropean.co.nz)

Niki Mills - 021 353 315  
Paul Mills - 022 536 0868  
Josh Giles - 021 087 54777

\* Finance calculation based on a 60 month term, 30% deposit and with an example annual fixed interest rate of 11.95%. Actual interest rate may be higher or lower. Includes an establishment fee of \$500.00 and a monthly maintenance fee of \$10.00. Full term total amount payable of \$62,920.71. Estimate only, not an offer of finance. Terms, conditions and lending criteria apply.