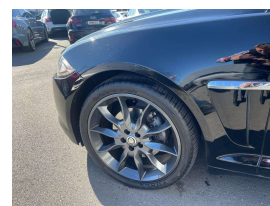
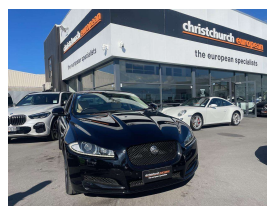
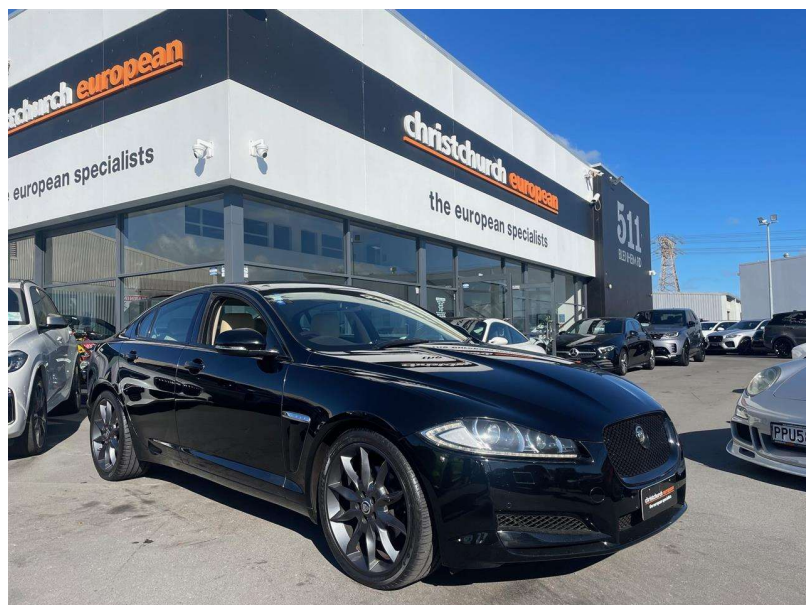


# 2013 Jaguar XF 2.2 Diesel Facelift Black Edition



## VEHICLE INFORMATION

### Cash Price

Includes GST,  
Registration &  
Licensing

**\$19,995**

Finance this vehicle  
from only

**\$74.96**

per week\*

Total Amount Payable  
\$25,488.16



### Body

Sedan

### Odometer

66,000 km

### Engine

2200 cc

### Fuel Type

Diesel

### Transmission

8 Speed Automatic

### Wheels

18.0000"

### VIN

-

### Reg No.

-

### Ext Colour

Black Metallic

### History

-

### Seats

5 seats

### Interior

Cream Leather

### Audio

-

### Stock ID

12565



Gain peace of mind  
with Mechanical  
Breakdown Insurance.  
Ask us how.

2013 Jaguar XF 2.2 Diesel Facelift Sedan, Black Metallic with Black Exterior Package. Upgraded Factory 18 inch Draco R Sports Alloys in Grey, Black Grills, LED Lighting, 8 Speed Automatic, Super-economical 2.2 Litre Diesel engine, Black Windowframes, Rotary Gear selector, Dark Woodgrain inlays, Touch Screen NZ Radio/NZ Navigation and Bluetooth Phone Kit/Reverse Camera, Multiple Airbags, ABS/ESP, Full Electrics etc. A smart looking low mileage XF here!.

**christchurch european**

**the european specialists**

Phone 03 366 8328, Email [sales@christchurcheuropean.co.nz](mailto:sales@christchurcheuropean.co.nz)  
511 Blenheim Road, Sockburn, Christchurch 8042, New Zealand  
[www.christchurcheuropean.co.nz](http://www.christchurcheuropean.co.nz)

Niki Mills - 021 353 315  
Paul Mills - 022 536 0868  
Josh Giles - 021 087 54777

\* Finance calculation based on a 60 month term, 30% deposit and with an example annual fixed interest rate of 10.95%. Actual interest rate may be higher or lower. Includes an establishment fee of \$500.00 and a monthly maintenance fee of \$10.00. Full term total amount payable of \$25,488.16. Estimate only, not an offer of finance. Terms, conditions and lending criteria apply.