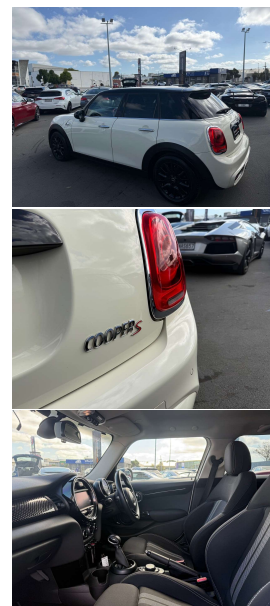


# 2016 Mini Cooper S 2.0 T Facelift Black Package



## VEHICLE INFORMATION

### Cash Price

Includes GST,  
Registration &  
Licensing

**\$22,995**

Finance this vehicle  
from only

**\$85.48**

per week\*

Total Amount Payable

**\$29,124.57**



Gain peace of mind  
with Mechanical  
Breakdown Insurance.  
Ask us how.

### Body

5 door, Hatchback

### Odometer

85,000 km

### Engine

2000 cc, Turbo

### Fuel Type

Petrol

### Transmission

Automatic

### Wheels

16.0000"

### VIN

WMWXS720202C50620

### Reg No.

-

### Ext Colour

White

### History

-

### Seats

5 seats

### Interior

Black Velour Sports Seats

### Audio

-

### Stock ID

13298

2016 Mini Cooper S 2.0T Facelift 5DR Black Package Hatchback, New generation 2.0 Turbo Cooper S 5Dr Facelift, Upgraded Sports Alloys in Gloss Black, Black Roof and Wingmirrors, Widescreen NZ NAV/Bluetooth Phone and Music/CD/Stereo/Reverse Camera/AUX, Chrome Fuel cap and Grills, Push Button Start, Carbon style interior detailing, Rear Centre exhaust tips, Privacy Glass, Climate Air, Full Electrics etc. Easy to park, nippy and a British Icon!

**christchurch european**

**the european specialists**

Phone 03 366 8328, Email [sales@christchurcheruropean.co.nz](mailto:sales@christchurcheruropean.co.nz)  
511 Blenheim Road, Sockburn, Christchurch 8042, New Zealand  
[www.christchurcheruropean.co.nz](http://www.christchurcheruropean.co.nz)

Niki Mills - 021 353 315  
Paul Mills - 022 536 0868  
Josh Giles - 021 087 54777

\* Finance calculation based on a 60 month term, 30% deposit and with an example annual fixed interest rate of 10.95%. Actual interest rate may be higher or lower. Includes an establishment fee of \$500.00 and a monthly maintenance fee of \$10.00. Full term total amount payable of \$29,124.57. Estimate only, not an offer of finance. Terms, conditions and lending criteria apply.