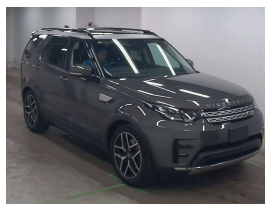


# 2017 Land Rover Discovery 5 HSE Dynamic SI6



## VEHICLE INFORMATION

### Cash Price

Includes GST,  
Registration &  
Licensing

**\$54,995**

Finance this vehicle  
from only

**\$202.26**

per week\*

Total Amount Payable

\$69,086.74



### Body

5 door, SUV / 4x4

### Odometer

65,000 km

### Engine

3000 cc, Supercharged

### Fuel Type

Petrol

### Transmission

8 Speed Automatic, 4WD

### Wheels

20.0000"

### VIN

SALRA2AVXHA007420

### Reg No.

-

### Ext Colour

Waitomo Grey Metallic

### History

Ex-Overseas

### Seats

7 seats

### Interior

Black Leather HSE Seating

### Audio

-

### Stock ID

14928



Gain peace of mind  
with Mechanical  
Breakdown Insurance.  
Ask us how.

2017 Land Rover Discovery 5 HSE 3.0 V6 Supercharged 7 Seater, New Generation 3.0 V6 Supercharged Petrol engine model- Excellent economy with No Diesel Taxes to pay and lower Registration costs! Unique example- Just 65,000km from new!, Upgraded Dynamic exterior package with improved Bumpers and Grills, High spec HSE vehicle in Waitomo Grey Metallic with optioned Silver Roof, Black Premium HSE Leather, Upgraded 20 inch Alloys Wheels, Glass Panoram Sunroof, Roof Rails fitted, Heated Seats front and rear-even 3rd Row, Heated Steering Wheel, Console Fridge, Air Suspension, 7 Seats, 360 Cameras, Ambient Lighting, Touch Screen CD/Stereo/Bluetooth Phone and Music and NZ Navigation, Cruise Control, Rear Rubber Boot Mat, Push Button Start and much more. The best look and best colour here! All set for Winter.

**christchurch european**

**the european specialists**

Phone 03 366 8328, Email sales@christchurcheruropean.co.nz  
511 Blenheim Road, Sockburn, Christchurch 8042, New Zealand  
www.christchurcheruropean.co.nz

Niki Mills - 021 353 315  
Paul Mills - 022 536 0868  
Josh Giles - 021 087 54777

\* Finance calculation based on a 60 month term, 30% deposit and with an example annual fixed interest rate of 11.95%. Actual interest rate may be higher or lower. Includes an establishment fee of \$500.00 and a monthly maintenance fee of \$10.00. Full term total amount payable of \$69,086.74. Estimate only, not an offer of finance. Terms, conditions and lending criteria apply.