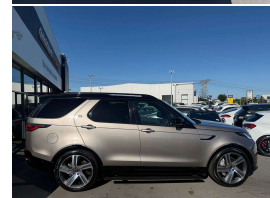
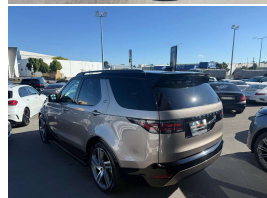
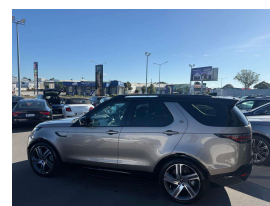


2021 Land Rover Discovery 5 D300 HSE R-Dynamic



VEHICLE INFORMATION

Cash Price

Includes GST,
Registration &
Licensing

\$109,995

Finance this vehicle
from only

\$390.70

per week*

Total Amount Payable
\$134,580.30



Body

5 door, SUV

Odometer

59,000 km

Engine

3000 cc, Straight Six

Fuel Type

Diesel

Transmission

8 Speed Automatic, 4WD

Wheels

22.0000"

VIN

SALRA2AW1M2447037

Reg No.

-

Ext Colour

Lautau Bronze Metallic

History

-

Seats

7 seats

Interior

Black/Cream Two Tone Leather

Audio

-

Stock ID

13580



Gain peace of mind
with Mechanical
Breakdown Insurance.
Ask us how.

2021 Land Rover Discovery 5 D300 R-Dynamic HSE New Model 7 Seater, New Generation 2021MY D300 Straight-Six/650NM Discovery 5 with multiple exterior/interior upgrades, Stunning Lautau Bronze Metallic with Two-Tone Black/Cream Windsor HSE Luxury Leather, 22 inch HSE Factory Sports Alloys, Sliding Panoramic Glass Roof, Black Exterior Package, Premium Heated and Cooling HSE Seats, Electric Fold-away Running Boards, Radar Cruise Control, Climate Air, 360 Surround Camera Package, Widescreen revised Virtual Dash Cluster with NZ NAV/BT/AUX/USBs/In-Control Aps/Car Play, Added Roof Rails fitted, Heated Steering Wheel, Privacy Glass, LED Lighting, Meridian Surround Sound, Air Suspension, Full Electrics etc. All set to take the family around in Luxury!

christchurch european | the european specialists

Phone 03 366 8328, Email sales@christchurcheruropean.co.nz
511 Blenheim Road, Sockburn, Christchurch 8042, New Zealand
www.christchurcheruropean.co.nz

Niki Mills - 021 353 315
Paul Mills - 022 536 0868
Josh Giles - 021 087 54777

* Finance calculation based on a 60 month term, 30% deposit and with an example annual fixed interest rate of 10.95%. Actual interest rate may be higher or lower. Includes an establishment fee of \$500.00 and a monthly maintenance fee of \$10.00. Full term total amount payable of \$134,580.30. Estimate only, not an offer of finance. Terms, conditions and lending criteria apply.