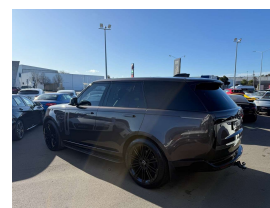


# 2022 Land Rover Range Rover D350 HSE Latest



## VEHICLE INFORMATION

### Cash Price

Includes GST,  
Registration &  
Licensing

**\$219,995**

Finance this vehicle  
from only

**\$776.60**

per week\*

Total Amount Payable

**\$267,915.13**



### Body

5 door, RV/SUV

### Odometer

39,000 km

### Engine

3000 cc

### Fuel Type

Diesel

### Transmission

8 Speed Automatic, 4WD

### Wheels

22.0000"

### VIN

SALKA9AW5NA001961

### Reg No.

QTT288

### Ext Colour

Charente Grey Metallic

### History

-

### Seats

5 seats

### Interior

Black Leather

### Audio

-

### Stock ID

13904



Gain peace of mind  
with Mechanical  
Breakdown Insurance.  
Ask us how.

2022 Range Rover D350 HSE New Model, Very latest model Range Rover HSE, Very high-spec and attractive in Charente Grey Metallic with Shadow Exterior Package and 23 inch Gloss Black Alloys, Heads-up display, Soft Close Doors, Panoramic Glass Sunroof, Privacy Glass, Heated and Ventilated Premium HSE Leather Seats, Running Boards fitted, Mud Flaps, 4 Wheel Steering, Radar Adaptive Cruise Control with AEB Braking, Full Virtual Dash with latest Touch-Screen Land Rover Infotainment-Apple Car Play/Bluetooth Phone and Music with Meridian 3D Surround Audio System/Google NZ Navigation, Air Suspension, LED Daytime Running Lights, Electric Tailgate, Keyless entry, 3D Surround Cameras, Land Rover 4WD Terrain response and more. The best look big Range Rover in the Country!.

**christchurch european** | the european specialists

Phone 03 366 8328, Email [sales@christchurcheruropean.co.nz](mailto:sales@christchurcheruropean.co.nz)  
511 Blenheim Road, Sockburn, Christchurch 8042, New Zealand  
[www.christchurcheruropean.co.nz](http://www.christchurcheruropean.co.nz)

Niki Mills - 021 353 315  
Paul Mills - 022 536 0868  
Josh Giles - 021 087 54777

\* Finance calculation based on a 60 month term, 30% deposit and with an example annual fixed interest rate of 10.95%. Actual interest rate may be higher or lower. Includes an establishment fee of \$500.00 and a monthly maintenance fee of \$10.00. Full term total amount payable of \$267,915.13. Estimate only, not an offer of finance. Terms, conditions and lending criteria apply.