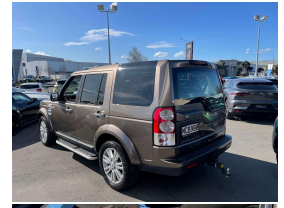


# 2011 Land Rover Discovery 4 3.0 SDV6 HSE Diesel



## VEHICLE INFORMATION

### Cash Price

Includes GST,  
Registration &  
Licensing

**\$29,995**

Finance this vehicle  
from only

**\$110.04**

per week\*

Total Amount Payable

**\$37,609.51**

finance  
**NOW**



Gain peace of mind  
with Mechanical  
Breakdown Insurance.  
Ask us how.

### Body

5 door, RV/SUV

### Odometer

158,000 km

### Engine

3000 cc, SDV6

### Fuel Type

Diesel

### Transmission

Automatic, 4WD

### Wheels

20.0000"

### VIN

SALLAAAF3BA581137

### Reg No.

PKY894

### Ext Colour

Nara Bronze Metallic

### History

-

### Seats

7 seats

### Interior

Cream Leather

### Audio

-

### Stock ID

11789

2011 Land Rover Discovery 4 HSE 3.0 SDV6 Diesel, Facelift increased Torque SDV6 engine, Easy care Nara Bronze Metallic with Luxury Soft Cream Leather, HSE Seating and Factory Alloys, Fold-away rear 7 Seats, Push Button Keyless start, Triple Glass Sunroofs, Surround Cameras, Park Sensors, LED Lighting, ABS/ESP, Touch Screen CD/Stereo/Bluetooth Phone, Full Electrics etc. Always a very popular model, popular with families and Off-Road adventures!

**christchurch european** | the european specialists

Phone 03 366 8328, Email [sales@christchurcheruropean.co.nz](mailto:sales@christchurcheruropean.co.nz)  
511 Blenheim Road, Sockburn, Christchurch 8042, New Zealand  
[www.christchurcheruropean.co.nz](http://www.christchurcheruropean.co.nz)

Niki Mills - 021 353 315  
Paul Mills - 022 536 0868  
Josh Giles - 021 087 54777

\* Finance calculation based on a 60 month term, 30% deposit and with an example annual fixed interest rate of 10.95%. Actual interest rate may be higher or lower. Includes an establishment fee of \$500.00 and a monthly maintenance fee of \$10.00. Full term total amount payable of \$37,609.51. Estimate only, not an offer of finance. Terms, conditions and lending criteria apply.