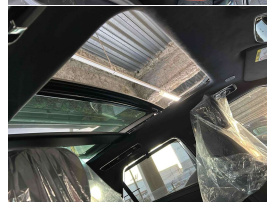
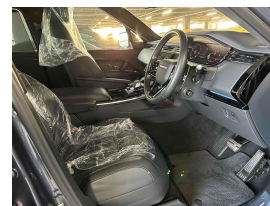
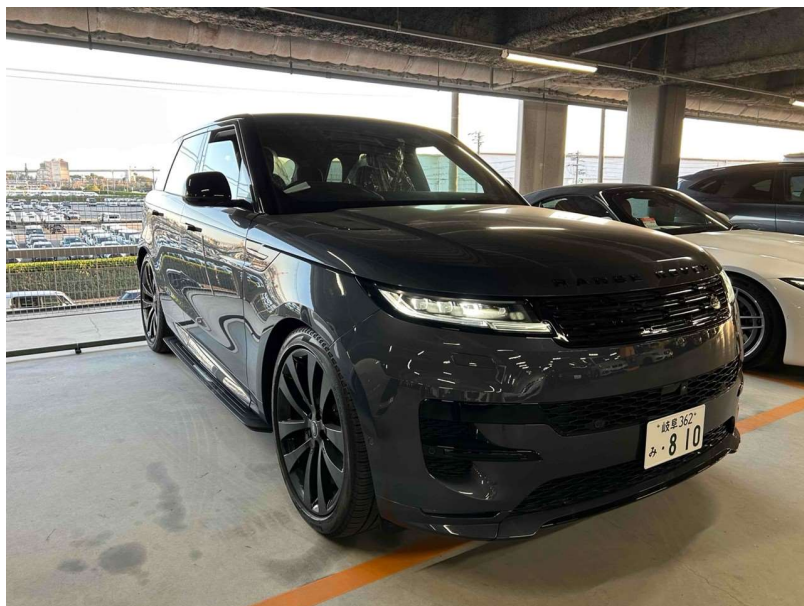


2023 Land Rover Range Rover Sport P400 First



VEHICLE INFORMATION

Cash Price

Includes GST,
Registration &
Licensing

\$179,995

Finance this vehicle
from only

\$636.27

per week*

Total Amount Payable
\$219,429.73

finance
NOW

Body

5 door, RV/SUV

Odometer

20,000 km

Engine

3000 cc

Fuel Type

Petrol

Transmission

8 Speed Automatic, 4WD

Wheels

23.0000"

VIN

SAL1A2AUXPA126278

Reg No.

-

Ext Colour

Varesine Blue/Grey Metallic

History

-

Seats

5 seats, Leather

Interior

Black Leather

Audio

-

Stock ID

13588



Gain peace of mind
with Mechanical
Breakdown Insurance.
Ask us how.

2023 Range Rover Sport P400 First Edition High-Spec Latest Model, 1/40 Ltd Edition model, Stunning Varesine Blue/Grey Metallic with Black Premium Leather combination, Upgraded 23 inch Style 5235 Gloss Black Sports Alloys, Glass Electric Panoramic Sunroof, Soft-Close Doors, Premium Heated/Cooled/Massage Seats, SVO Bespoke full extended Leather package, Black exterior styling, Console Fridge, Heads-up display, Electric Running Boards, Black Contrast Roof, Radar Adaptive Cruise Control, Ambient Interior Lighting, 3D Surround Cameras with NZ NAV/Apple Car Play/Bluetooth Streaming, Dynamic Air Suspension, Gloss Black Front Grille, Forged Carbon interior inlays, Pivi Diamond Screen, Clear-view sight interior Mirror, Full Electrics and much more. Be quick!, the Latest model Sport full of added spec with no RUCs to pay here.

christchurch european | the european specialists

Phone 03 366 8328, Email sales@christchurcheuropean.co.nz
511 Blenheim Road, Sockburn, Christchurch 8042, New Zealand
www.christchurcheuropean.co.nz

Niki Mills - 021 353 315
Paul Mills - 022 536 0868
Josh Giles - 021 087 54777

* Finance calculation based on a 60 month term, 30% deposit and with an example annual fixed interest rate of 10.95%. Actual interest rate may be higher or lower. Includes an establishment fee of \$500.00 and a monthly maintenance fee of \$10.00. Full term total amount payable of \$219,429.73. Estimate only, not an offer of finance. Terms, conditions and lending criteria apply.