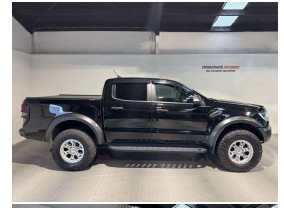


# 2021 Ford Ranger Raptor 2.0 Bi-Turbo NZ New



## VEHICLE INFORMATION

### Cash Price

Includes GST,  
Registration &  
Licensing

**\$54,995**

Finance this vehicle  
from only

**\$202.26**

per week\*

Total Amount Payable

\$69,086.74



Gain peace of mind  
with Mechanical  
Breakdown Insurance.  
Ask us how.

### Body

4 door, Ute

### Odometer

78,000 km

### Engine

2000 cc, Turbo

### Fuel Type

Diesel

### Transmission

10 Speed Automatic, 4WD

### Wheels

17.0000"

### VIN

MPBUMFE60MX335983

### Reg No.

RNC412

### Ext Colour

Black Metallic

### History

NZ New

### Seats

5 seats

### Interior

Black Half Leather

### Audio

-

### Stock ID

14830

2021 Ford Ranger Raptor 2.0 Twin-Turbo Double Cab Ute, NZ New just 78,000kms from new! Added Lenso Sports Alloys in Silver with Maxxis All-Terrain 4WD Tyres fitted for an aggressive look!, Factory Fox Suspension fitted, Black Raptor Front Grill, Added Rear Lockable Rolling Hardlid, Mudflaps fitted, LED Lighting, Raptor Black Half Leather Detailing Sports Seats, Running Boards/Towbar fitted, Privacy Glass, 10 Speed Automatic, Touch Screen Ford NZ NAV/Bluetooth Streaming/Apple Car Play, Black Euro Plates, Heated Seats, Bonnet protector, Multi-Function Steering Wheel, Full Electrics etc. Simply the best looking Ute around today!

**christchurch european** | the european specialists

Phone 03 366 8328, Email [sales@christchurcheruropean.co.nz](mailto:sales@christchurcheruropean.co.nz)  
511 Blenheim Road, Sockburn, Christchurch 8042, New Zealand  
[www.christchurcheruropean.co.nz](http://www.christchurcheruropean.co.nz)

Niki Mills - 021 353 315  
Paul Mills - 022 536 0868  
Josh Giles - 021 087 54777

\* Finance calculation based on a 60 month term, 30% deposit and with an example annual fixed interest rate of 11.95%. Actual interest rate may be higher or lower. Includes an establishment fee of \$500.00 and a monthly maintenance fee of \$10.00. Full term total amount payable of \$69,086.74. Estimate only, not an offer of finance. Terms, conditions and lending criteria apply.