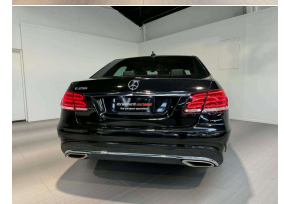
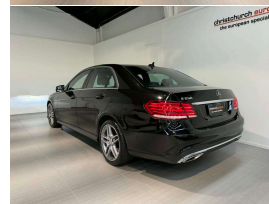
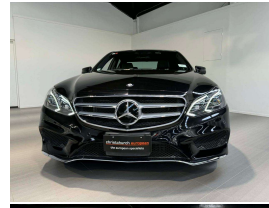


# 2016 Mercedes-Benz E 250 Avantgarde Facelift



## VEHICLE INFORMATION

### Cash Price

Includes GST,  
Registration &  
Licensing

**\$29,995**

Finance this vehicle  
from only

**\$112.53**

per week\*

Total Amount Payable

**\$38,256.59**



Gain peace of mind  
with Mechanical  
Breakdown Insurance.  
Ask us how.

### Body

4 door, Sedan

### Odometer

78,000 km

### Engine

2000 cc, Turbo

### Fuel Type

Petrol

### Transmission

7 Speed Auto

### Wheels

18.0000"

### VIN

WDD2120362B285140

### Reg No.

-

### Ext Colour

Black Metallic

### History

-

### Seats

5 seats

### Interior

Part Leather/Velour

### Audio

-

### Stock ID

13361

2016 Mercedes Benz E250 2.0 Turbo Facelift Sedan, New Generation E Class model with revised Interior, LED Lighting and Mercedes Benz Infotainment. Attractive Black Metallic with Part Black Leather combination, Factory 18 inch AMG Line Sports Alloys, 7 Speed Automatic, Heated/Electric Seats, Mercedes Command CD/Stereo/Bluetooth/NZ Navigation, 360 Cameras, Radar Cruise Control, Climate Air, Multiple Airbags, ABS, Full Electrics etc. Late model, Luxurious and Roomy Mercedes Benz motoring here!

**christchurch european** | the european specialists

Phone 03 366 8328, Email [sales@christchurcheruropean.co.nz](mailto:sales@christchurcheruropean.co.nz)  
511 Blenheim Road, Sockburn, Christchurch 8042, New Zealand  
[www.christchurcheruropean.co.nz](http://www.christchurcheruropean.co.nz)

Niki Mills - 021 353 315  
Paul Mills - 022 536 0868  
Josh Giles - 021 087 54777

\* Finance calculation based on a 60 month term, 30% deposit and with an example annual fixed interest rate of 11.95%. Actual interest rate may be higher or lower. Includes an establishment fee of \$500.00 and a monthly maintenance fee of \$10.00. Full term total amount payable of \$38,256.59. Estimate only, not an offer of finance. Terms, conditions and lending criteria apply.